



## Waste and Recycling Guide 2024/25

My recycling area is: *(please tick for your reference)*

Area 1

Area 2

Christmas collection

Saturday collection day due to Public Holiday

The City provides a weekly recycling bin collection service between Monday 16 December and Friday 27 December 2024.

JULY						
S	M	T	W	T	F	S
	1	2	3	4	5	6
7	8	9	10	11	12	13
14	15	16	17	18	19	20
21	22	23	24	25	26	27
28	29	30	31			

AUGUST						
S	M	T	W	T	F	S
				1	2	3
4	5	6	7	8	9	10
11	12	13	14	15	16	17
18	19	20	21	22	23	24
25	26	27	28	29	30	31

SEPTEMBER						
S	M	T	W	T	F	S
1	2	3	4	5	6	7
8	9	10	11	12	13	14
15	16	17	18	19	20	21
22	23	24	25	26	27	28
29	30					

OCTOBER						
S	M	T	W	T	F	S
		1	2	3	4	5
6	7	8	9	10	11	12
13	14	15	16	17	18	19
20	21	22	23	24	25	26
27	28	29	30	31		

NOVEMBER						
S	M	T	W	T	F	S
					1	2
3	4	5	6	7	8	9
10	11	12	13	14	15	16
17	18	19	20	21	22	23
24	25	26	27	28	29	30

DECEMBER						
S	M	T	W	T	F	S
1	2	3	4	5	6	7
8	9	10	11	12	13	14
15	16	17	18	19	20	21
22	23	24	25	26	27	28
29	30	31				

JANUARY						
S	M	T	W	T	F	S
				1	2	3
4	5	6	7	8	9	10
11	12	13	14	15	16	17
18	19	20	21	22	23	24
25	26	27	28	29	30	31

FEBRUARY						
S	M	T	W	T	F	S
						1
2	3	4	5	6	7	8
9	10	11	12	13	14	15
16	17	18	19	20	21	22
23	24	25	26	27	28	

MARCH						
S	M	T	W	T	F	S
30	31					1
2	3	4	5	6	7	8
9	10	11	12	13	14	15
16	17	18	19	20	21	22
23	24	25	26	27	28	29

APRIL						
S	M	T	W	T	F	S
		1	2	3	4	5
6	7	8	9	10	11	12
13	14	15	16	17	18	19
20	21	22	23	24	25	26
27	28	29	30			

MAY						
S	M	T	W	T	F	S
				1	2	3
4	5	6	7	8	9	10
11	12	13	14	15	16	17
18	19	20	21	22	23	24
25	26	27	28	29	30	31

JUNE						
S	M	T	W	T	F	S
1	2	3	4	5	6	7
8	9	10	11	12	13	14
15	16	17	18	19	20	21
22	23	24	25	26	27	28
29	30					



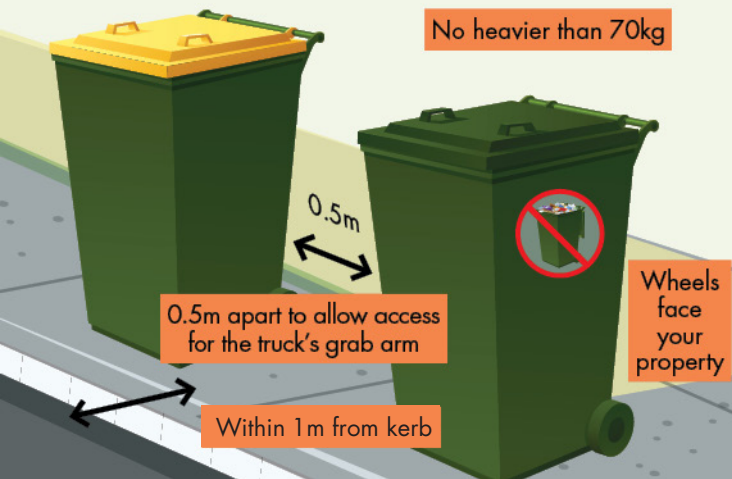
There will be no waste or recycling collections on these Public Holidays. Bins will be collected the next day.

## Collection days and your recycling area

To find out your next rubbish and recycling bin collection date for your property, please enter your address at the [find your waste collection dates](#) webpage on this website or call the City on 9397 3000. Information about waste and recycling is no longer printed on Rate Notices.

## How to place your bins

- ✓ Only use bins issued by the City of Gosnells
- ✓ Bins must be on the verge by 6am on the day of your collection and returned to your property within 24 hours of collection
- ✓ Put lawn clippings and small prunings on top of waste in your rubbish bin to prevent them becoming jammed
- ✓ Make sure bins aren't placed under a tree canopy, behind parked cars or too close to garage doors and letter boxes



Don't overfill your bin as this prevents the lid from closing, which results in wind-blown litter, spillages during collection and prevents your bin from being emptied properly.

## What not to place in your bins

Please do not place any of the following items in your bins as they have the potential to cause damage/fires in the collection truck:

- ✘ Hot ashes
- ✘ Bricks, tiles, building materials, sand, soil, concrete, rocks, asbestos
- ✘ Household hazardous waste including flammable liquids, petrol, paints, acids, chemicals, poisons, household batteries (dry-cell), motor oil, gas cylinders, aerosol cans (see page 9)
- ✘ Car parts and tyres



## Collection days and your recycling area

Your yellow top recycling bin is emptied fortnightly on the same day as your normal rubbish bin collection. To find out your next recycling bin collection date for your property, please enter your address at the [find your waste collection dates](#) webpage on this website or call the City on 9397 3000.

## What to place in your recycling bin

Contamination can make your recycling efforts go to waste. All recyclable materials shown below should be placed **loose** in your recycling bin and **not in plastic bags**.

For more information on recyclable materials visit [recycleright.wa.gov.au](http://recycleright.wa.gov.au).



## Keep these items out of your yellow top bins

- ✗ Polystyrene, meat trays, cups and beads
- ✗ Green waste or food waste (see page 1)
- ✗ Gas bottles, flares and batteries (see page 9)
- ✗ Plastic bags or soft plastics
- ✗ Textiles or clothing
- ✗ Nappies
- ✗ Aerosol cans (full or empty)

## Christmas recycling collections

The City provides a weekly recycling bin collection service between Monday 16 December and Saturday 28 December 2024.

**A friendly reminder to put out your recycling bin before 6am during this period.**

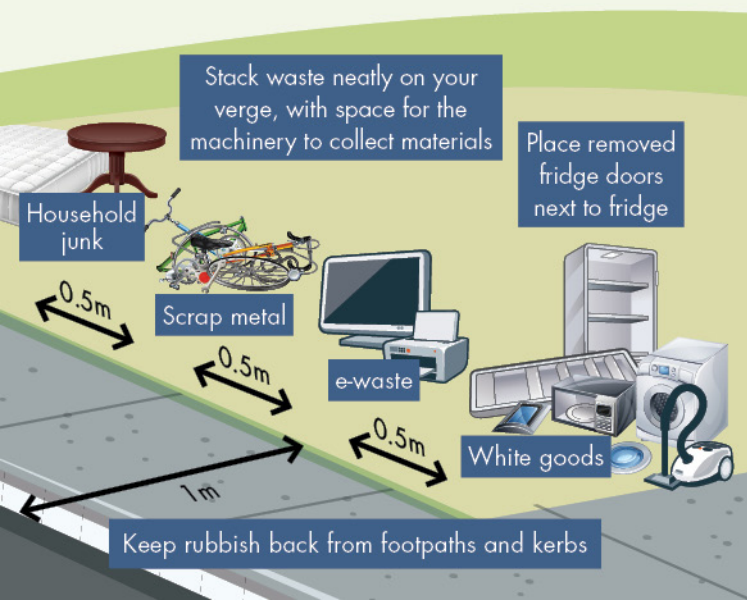


## Collection dates

To find out your next general junk collection date for your property, please enter your address at the [find your waste collection dates](#) webpage on this website or call the City on 9397 3000.

## Guidelines

- Reduce illegal dumping and nuisance pickers by placing items on the verge of your property **no earlier than 7 days** prior to your collection date.
- Please separate the following from household junk waste, e-waste, mattresses, white goods and scrap metals, as the City recycles these items.
- Do not place your waste on vacant properties or public reserves as it will not be collected.
- If any item set out for collection doesn't comply with guidelines, it won't be collected and you must remove it within 7 days or you may be fined.



Donate unwanted goods to charity. If items are in good condition, check with your local charity or community group to see if you can donate it. Visit [www.giv.org.au](http://www.giv.org.au) for more information.

### Important safety requirements

For the safety of all, and to avoid damage to properties, please do not place waste next to trees, green power domes, water meters, reticulation, walls, letter boxes, street signs or any other object. **The City accepts no responsibility for damage caused should you fail to comply with this safety requirement.**

### The City will collect:

- ✓ Household furniture (no glass panels or table tops)
- ✓ White goods, such as stoves, dishwashers, washing machines and clothes dryers (doors must be removed)
- ✓ Air conditioners, fridges and freezers (doors must be removed. Fridges and freezers no longer need to be degassed)
- ✓ General junk items, scrap metal and timber products up to 1.5m in length

### The City will not collect:

- ✗ Hazardous materials such as chemicals, paints, pesticides, solvents, motor oil and asbestos (see page 9)
- ✗ Bricks, sand, cement, concrete products, and fencing sheets, Hardiflex and building or renovation materials
- ✗ All glass, including mirrors, shower screens, panels or table tops
- ✗ Tyres, car bodies and car parts
- ✗ Batteries and gas cylinders (see page 9)
- ✗ Materials more than 1.5m in length (except fridges mattresses and furniture)
- ✗ Play equipment and trampolines that have not been dismantled
- ✗ Green waste (see page 7)
- ✗ General junk from commercial properties, schools or churches

## Collection dates

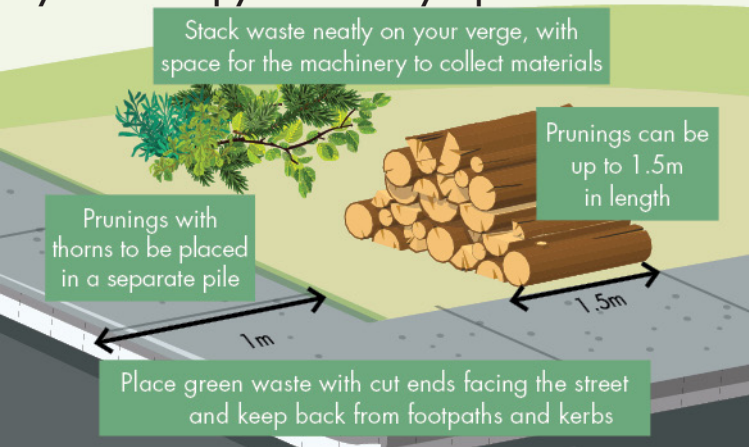
To find out your next green verge collection dates for your property, please enter your address at the [find your waste collection dates](#) webpage on this website or call the the City on 9397 3000.

## Guidelines

- Place green waste on the verge of your property **no earlier than 7 days** prior to your collection date.
- Green waste must be free of contaminants, such as sawn and treated timber, wooden pallets, metals, plastics and household waste, and must not be placed in bags or cardboard boxes as it will not be collected.
- If the green waste set out for collection doesn't comply, it won't be collected and you must remove it within 7 days or you may be fined.
- Do not place your waste on vacant properties or public reserves as it will not be collected.

## Important safety requirements

For the safety of all, and to avoid damage to properties, please do not place green waste next to trees, power poles, green power domes, water meters, reticulation, walls, letter boxes, street signs or any other objects. **The City accepts no responsibility for damage caused should you fail to comply with this safety requirement.**





### The City will collect:

- ✓ Trees and prunings up to 1.5m in length and up to 35cm in diameter, placed in neat piles with cut ends facing towards the street
- ✓ Prunings with thorns placed in a separate pile
- ✓ Palms cut up to a maximum length of 30cm

### The City will not collect:

- ✗ Bags, boxes or loose leaf litter or lawn clippings (please place in your green rubbish bin for collection)
- ✗ Sawn or treated timber
- ✗ Prunings more than 1.5m in length or more than 35cm in diameter
- ✗ Verge tree prunings. The City is responsible for the maintenance of verge trees.
- ✗ Weed and root material, including dug out lawn
- ✗ Sand and soil material
- ✗ General rubbish, metal, timber, junk or whitegoods (see page 5)
- ✗ Mixed piles of junk and green waste
- ✗ Green waste from commercial properties, schools or churches

### What happens to my green waste?

All green waste collected is taken to a processing facility where it is turned into important resources, such as soil conditioner and horticultural products.

For this reason, the processing facility will not accept any contaminated green waste.

## Household hazardous waste (HHW)

Household hazardous waste includes, flammable liquids, petrol, paints, acids, chemicals, poisons and gas cylinders.

Domestic quantities of HHW can be disposed of free of charge through the WA Waste Authority Household Hazardous Waste Program. For more information visit [www.wastenet.net.au/programs.aspx](http://www.wastenet.net.au/programs.aspx).

## E-waste, batteries and compact fluorescent lamps

E-waste is any electronic equipment including personal computers, printers and keyboards, televisions and associated cabling. You can include e-waste in your general junk verge collection (see page 5).

Household batteries (dry-cell) and compact fluorescent lamps (CFLs) can be recycled at many places.

Visit [gosnells.wa.gov.au/waste](http://gosnells.wa.gov.au/waste) to find out your closest facility.



## Are tip passes available for residents?

As the City does not operate a waste disposal site, it does not offer tip passes

For alternative waste disposal sites, visit [gosnells.wa.gov.au/waste](http://gosnells.wa.gov.au/waste) or [www.recyclingnearyou.com.au](http://www.recyclingnearyou.com.au).

Disposal costs may apply to users of these sites.

## Who do I report a damaged or stolen bin to?

Rubbish and recycling bins damaged or stolen can be reported via [gosnells.wa.gov.au/online](http://gosnells.wa.gov.au/online) or by contacting the City on 9397 3000.

## How can I report littering and illegal dumping?

You can help to reduce litter by becoming a Keep Australia Beautiful WA Litter Reporter. If you see someone littering, you can report the offence online or via an Apple or Android app.

To register, and for more information, visit [www.kabc.wa.gov.au](http://www.kabc.wa.gov.au).



**City of Gosnells  
PO Box 662  
Gosnells WA 6990**

**9397 3000**

**info@gosnells.wa.gov.au  
gosnells.wa.gov.au**

**This brochure is available  
in alternative formats.**