

Vision Plan



LEGEND

	EXTENT OF SITE - PRIMARY
	EXTENT OF SITE - SECONDARY
EXISTING	
	TREES
	WETLAND VEGETATION
	UPLAND VEGETATION
	FENCE (TO REMAIN)
	FENCE (TO BE REMOVED)
	TURF
	FOOTPATH
	BRIDGE (TO BE REPLACED)
	BUILT FORM
	WATER CORP INFRASTRUCTURE
	BUS STOP
PROPOSED	
	STREET TREES (REFER WAYFINDING STRATEGY)
	WETLAND TREES
	UPLAND TREES
	LANDSCAPE MASS PLANTING
	REVEGETATION
	IRRIGATED TURF
	MULCH
	VEGETATION MANAGEMENT AREA
	DRY LAND PAVING PATTERN - MAJOR NODE
	DRY LAND PAVING PATTERN - MINOR NODE
	FOOTPATH
	BOARDWALK / DECK NODE
	SUSPENSION BRIDGE
	PRE-CAST CONCRETE TERRACES
	GRAVEL PAVING
	BOLLARDS / GATE
	WALL
	BENCH SEATING
	PICNIC TABLE / BBQ / BIN / DRINK FOUNTAIN
	LIGHT POLE
	SHADE STRUCTURE
	PLAY EQUIPMENT
	KIOSK / STORAGE AREA
	ENHANCEMENT TO EXISTING ROUND-ABOUT
	NEW ROUND-ABOUT AND PLANTING
ART ELEMENTS	
	WELCOME TO COUNTRY ART ELEMENTS
	DIRECTIONAL SIGNAGE - MAJOR
	DIRECTIONAL SIGNAGE - MINOR
	BIRD ROOSTING ART ELEMENTS
	NATURE PLAY INTERPRETATION
	FENCE ARTWORK

The MCP Vision Plan is the community's long-term aspiration describing their goals and the outcomes that need to be achieved for the future of the valuable recreational and educational site. The Vision Plan reflects the values and beliefs of the community and stakeholders who have contributed to its development. It communicates the site's unique qualities and desired amenities to achieve a sustainable and resilient environment within the City of Gosnells. The plan is a long term strategy aimed to be delivered over a number of years and is enduring yet flexible. The overall plan is grounded in the existing strengths and opportunities of the Mary Carroll Park and surrounding urban fabric and community.

The following points describe the Vision Plan using the key issues raised by the community through consultation.

Access and Circulation

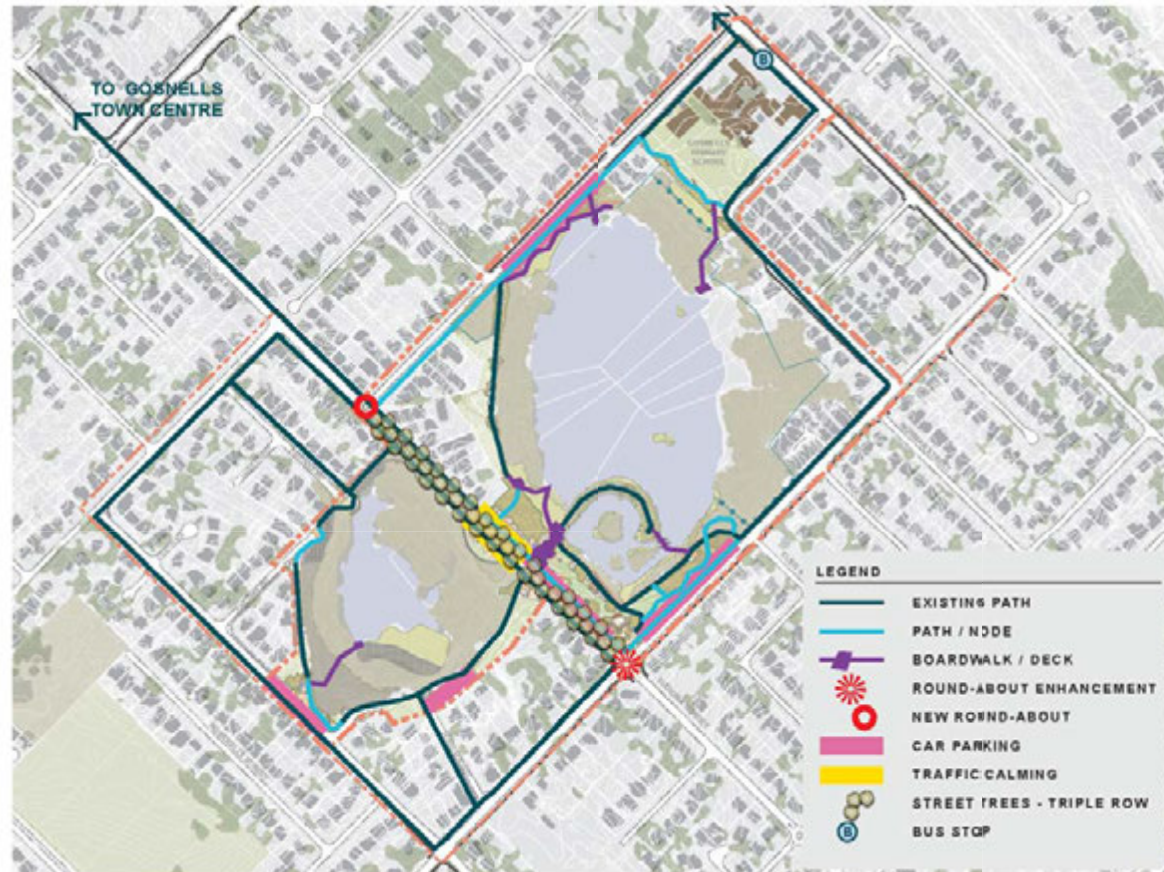
- Circuit around the entire Park using existing path networks and new internal boardwalk structures and pathways.
- Directional signage at key locations around the Park will increase path system legibility.
- Suspension bridge connecting the causeway to the pedestrian network.
- Paving and streetscape treatments combined with major artworks at the junction of both parks on Eudoria Street will assist in unifying the spaces on both sides of the street.
- Dog access will be limited to on leashes only around the Park and this will be sign posted.

- Seasonal signage and streetscape treatments will assist in slowing vehicle traffic around the Park for fauna protection.
- Increased roadside car parking at key entry nodes to enable easy access to the wetlands.
- Activation will improve passive surveillance.
- New attractively landscaped roundabout at the intersection of Eudoria and May Streets improves access and marks the beginning of traffic calming on Eudoria Street.
- Street tree planting aids traffic calming provides shade for pedestrians and supports the area's biodiversity.

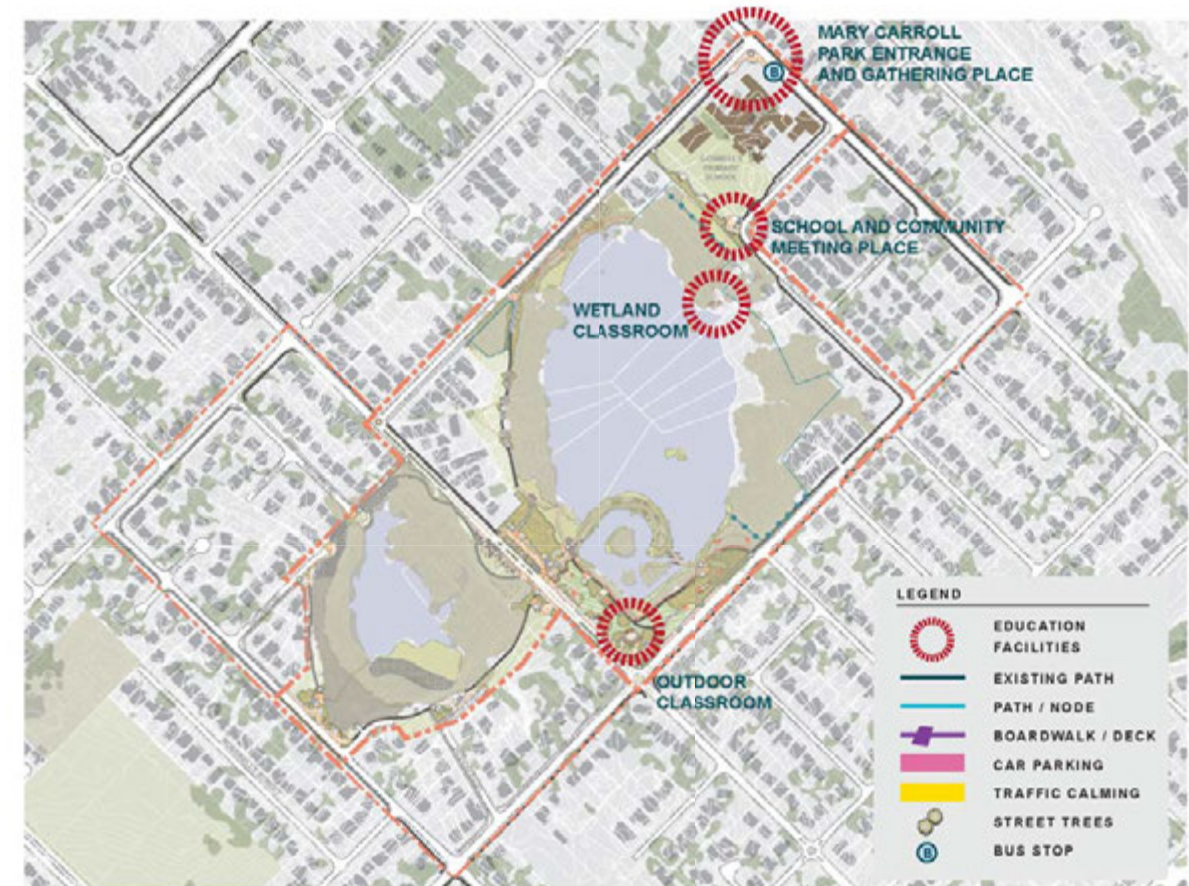
School and Wetland Connections

- Environmental education is throughout the wetland network through physical activities, signage, play and artworks.
- A physical connection from the school to the wetland has been integrated via a boardwalk and platform which can hold up to 60 people.
- Outdoor classrooms have been included in a number of locations and for varying sized groups.
- A number of programs could be implemented to involve the children in rehabilitation through planting days, water testing through science projects and art works.

- In order to activate the Park and reduce antisocial behaviour a number of activities have been integrated across the Park including a range of play opportunities, educational interpretation and bird watching.



Access and Circulation



School and Wetland Connections



Environmental and Social Interpretation



Environmental and Social Interpretation

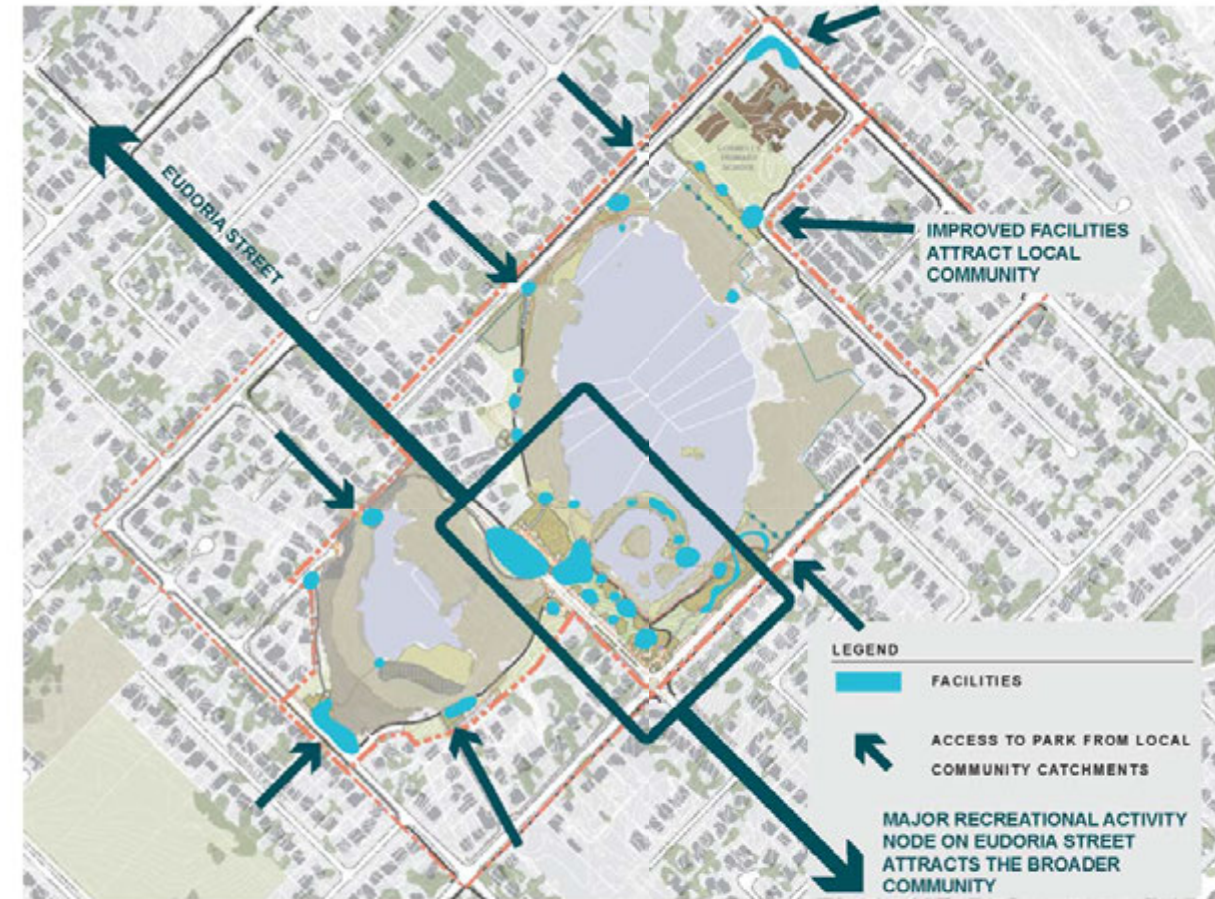
- Variety of opportunities across the whole site to explore both environmental and cultural aspects of the site through a comprehensive movement, signage and interpretation network.
- The key piece and entry to the wetland will be the Welcome to Country art installation located on Eudoria Street. This will be a dynamic piece which will involve many local community groups over a number of years.

Improved Facilities

- Extensive path network utilising existing pathways and new paths / boardwalks will provide a range of walking, jogging and cycling opportunities.
- Along the path network will be various resting opportunities with bench seating and interpretative elements. These seating locations will take advantage of the existing tree canopy for shade.
- Picnic facilities are located at key locations around the wetlands – most areas have provision for picnic tables, barbeques, shade structures, bins and a drinking fountain.
- Lighting will be located around the Eudoria Street hub only as this is the main recreational destination and has the least residential fringe.
- The existing toilet block on Eudoria Street will be retrofitted and will also have a storage structure attached. A small kiosk structure will also be located within close proximity. These amenities will all be located on a deck structure providing a central gathering location for the hub.

Environment and Recreation

- The plan aims to assist in fire hazard management through the retention of the dryland grass areas adjacent to residential lots which will assist with limiting fuel capabilities.
- To reduce rubbish dumping within the wetland, boardwalks and bollards will deter vehicular access. Furthermore, a sense of ownership over the wetlands by the community through the implementation of the works will help adjust people's perceptions of the place.
- Integrate native planted drainage swales to assist with filtering runoff before flowing into the wetland system.
- A vegetation management program will be undertaken to remove foreign species and manage weed species within the wetlands.
- Key educational environmental interpretation regarding the natural cycle of each wetland will inform the community about the wetlands' current appearance and environmental processes.
- The existing islands within the wetlands will be rehabilitated for bird refuge.
- All planting will be native species locally found in this environment.
- Recreation is coordinated in established activity areas and strategic underutilised spaces.



Improved Facilities



Environment and Recreation