

# Project Areas

The following section outlines the Vision Plan concept for 13 key areas, identifying:

- the role of the area
- design elements
- place interpretation.

Each section has been developed to assist in sourcing funding for the works and provide a design brief for the preparation of detailed design and documentation for each stage of works.

## Main Recreational Node

1. Welcome to Country
2. Eudoria Street Hub
3. Causeway Connection

## Large Wetland Recreational Circuit

4. Eudoria to Croft Street Connection
5. May Street Activation
6. Gosnells Primary School Learning Centre
7. Gosnells Primary School Entrance
8. Bird Sanctuary Education

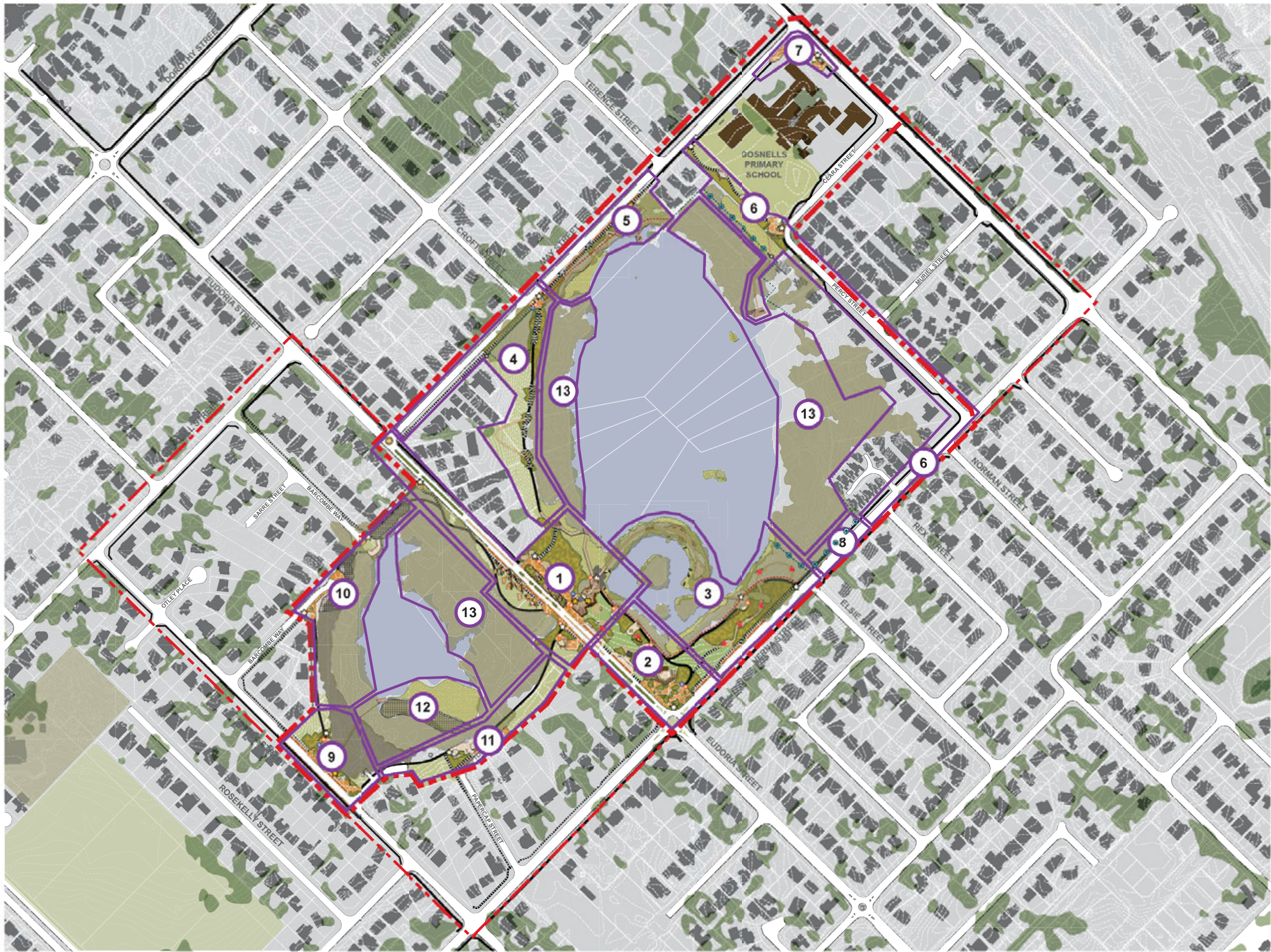
## Small Wetland Recreational Circuit

9. James Street Activation
10. Barcombe Way Connections
11. Shipton Street Activation
12. James Street Wetland Management

## Environmental Rehabilitation and Management

13. Special Habitat Areas

LEGEND	
	EXTENT OF SITE - PRIMARY
	EXTENT OF SITE - SECONDARY
<b>EXISTING</b>	
	TREES
	WETLAND VEGETATION
	UPLAND VEGETATION
	FENCE (TO REMAIN)
	FENCE (TO BE REMOVED)
	TURF
	FOOTPATH
	BRIDGE (TO BE REPLACED)
	BUILT FORM
	WATER CORP INFRASTRUCTURE
	BUS STOP
<b>PROPOSED</b>	
	STREET TREES (REFER WAYFINDING STRATEGY)
	WETLAND TREES
	UPLAND TREES
	LANDSCAPE MASS PLANTING
	REVEGETATION
	IRRIGATED TURF
	MULCH
	VEGETATION MANAGEMENT AREA
	DRY LAND PAVING PATTERN - MAJOR NODE
	DRY LAND PAVING PATTERN - MINOR NODE
	FOOTPATH
	BOARDWALK / DECK NODE
	SUSPENSION BRIDGE
	PRE-CAST CONCRETE TERRACES
	GRAVEL PAVING
	BOLLARDS / GATE
	WALL
	BENCH SEATING
	PICNIC TABLE / BBQ / BIN / DRINK FOUNTAIN
	LIGHT POLE
	SHADE STRUCTURE
	PLAY EQUIPMENT
	KIOSK / STORAGE AREA
	ENHANCEMENT TO EXISTING ROUND-ABOUT
	NEW ROUND-ABOUT AND PLANTING
	WELCOME TO COUNTRY ART ELEMENTS
	DIRECTIONAL SIGNAGE - MAJOR
	DIRECTIONAL SIGNAGE - MINOR
	BIRD ROOSTING ART ELEMENTS
	NATURE PLAY INTERPRETATION
	FENCE ARTWORK



NOTE: Street trees are omitted from the following plans in order to show concepts more clearly. Refer to the Master Plan (p28) for the complete landscape concept.

# Area 1 - Welcome to Country

# kaya nighe wardandi noongar boogera kidja whadjuk

Welcome to Country, this is Whadjuk Country and Talk



## Role of the Area

Formal entry to the Park and central linkage of recreational circuits. Features include picnic facilities, shelters, upgraded toilets, new small kiosk and storage, on-street parking and landmark "Welcome to Country" sculptures.

## Design Elements

1. Entry environment to the Wetland precinct. A new attractively landscaped roundabout at the intersection of Eudoria and May Streets improves access and marks the beginning of traffic calming on Eudoria Street.
2. Vertical elements such as salvaged power poles or tree logs engraved with text and art works. These artworks could be implemented over a number of years by different community groups. The first should be an Aboriginal Whadjuk Welcome to Country.
3. Triple avenue of Eucalyptus or Melaleuca (Paperbark) street trees to aid in traffic calming. Refer to master plan on page 28.
4. Proposed large paved areas in shapes reflecting the wetland earth with paving pattern theme to reflect dry cracked earth.
5. Small entry node to enhance the pedestrian visitor experience of arrival in the Park and wetlands. Minor directional signage to highlight the activities and

amenities available in the Park.

6. New pathway aligned with Eudoria Street western edge for increased access.
7. Parallel car parking to northbound carriageway to encourage visitors to stop and access the Park.
8. Existing carpark to be resurfaced with dry cracked paving pattern to cater for car parking and potential festivals or markets.
9. Bollards to restrict access into the wetland environment.
10. Eudoria Street Node – Construct elevated deck platform level with the existing toilet block and wrap around trees both within the drainage connection between the wetlands and in the Park. Enhance and renovate existing toilet block to include lockable storage rooms for the Friends of Mary Carroll Park (FoMCP). Construct a kiosk facility which could be open seasonally or for events. Bench seating would be placed around the built form for visitors to rest and meet other people to encourage social interaction; additionally the southern deck edge could be used as terrace seating to return to grade. Major directional signage would be located on the western and eastern ends of the deck structure to assist in wayfinding.
11. Concrete platforms in a dry cracked earth pattern will assist in concealing drainage outlet and addressing the transition

between the main node and the surrounding pedestrian path network.

12. Viewing platform with interpretation opportunities and bird viewing.
13. Rehabilitation using native wetland species potentially undertaken in collaboration with the FoMCP.
14. Picnic area with barbeque and bin facilities and shade structure.
15. Irrigated turf to main active node.
16. Custom built play equipment – timber stepping logs and steppers incorporating interpretation.
17. Introduce mass native planting and retain existing trees. (Note: formerly a carpark, this area still contains road base).
18. James Street wetland entry with major directional signage and picnic area.
19. Mass native planting to drainage connection between the wetlands.
20. Existing path to be retained.

## Place Interpretation

### Primary Theme

Welcome to Country from all of the community.

### Key Messages

It is important to recognise traditional Aboriginal owners of the land.

Recognise that there is a diverse range of community and individuals who value, access and contribute to the wetlands.

Recognise that the wetlands play a significant role in educating the community about the environment.

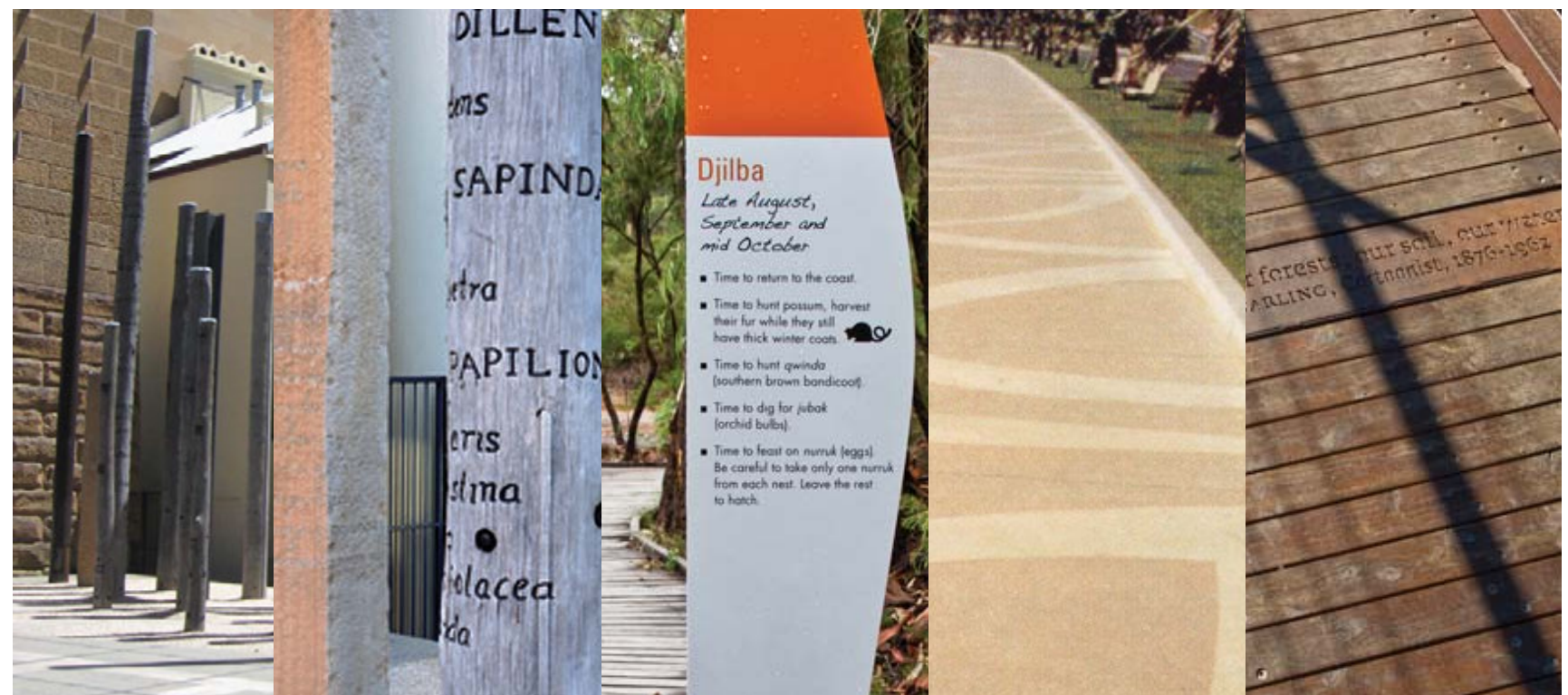
### Storylines and Form of Interpretation

Introduce the concept of the Park being a 'living classroom' with a meaningful Aboriginal context and interpret the cues and clues that are taken from the land, the learnings that occur 'on country' and how the environment and the seasons teach us about how traditional Aboriginal people once lived in the area. This could be communicated via a spoken Welcome to Country sound point such as a solar powered speaker in the vertical artworks.

Recognise that other community groups could contribute to the vertical artworks Welcome to Country through art projects including Gosnells Primary School, FoMCP and the Gosnells Men's Shed.

Celebrate the Noongar name for the Park or type of area, ie wetland. Collaborate with local Noongar Elders to find out the Whadjuk name for the site and include on all signage referencing the name of the Park.

Highlight key native flora and fauna species and their use, Aboriginal name, common name and scientific names. Incorporate the species within the timber stepping logs and steppers play equipment to get children talking about these ideas with their parents.



# Area 2 - Eudoria Street Hub



## Role of the Area

Core recreational node and gathering place. Features include picnic facilities, shelters, purpose built play equipment, on-street parking, interpretive art and signage, botanical garden and amphitheatre for large group gathering and an outdoor classroom.

## Design Elements

1. Southern entry environment to the precinct with an attractively landscaped roundabout.
2. Triple avenue of Eucalyptus or Melaleuca (Paperbark) street trees to aid in traffic calming.
3. Major Node - dark coloured pavement areas with paving pattern reflecting the dry cracked earth.
4. Minor Node - light coloured pavement areas with paving pattern reflecting the dry cracked earth.
5. Major entry node to enhance the pedestrian and vehicular visitor experience of arrival in the Park. Major directional signage to highlight the activities and amenities available in the Park will be located on the corner of Eudoria and Verna Streets. A botanical garden will be created by removing sections of the pavement to cater for mono-cultures of plants to highlight the various native species typically found in the region. Each planting area will have signage to communicate this information.
6. Outdoor classroom – timber bench seating in an amphitheatre layout to encourage small and large groups to congregate to socialise or undertake outdoor education sessions. A small raised timber stage area to the north of the bench seating to cater

for diverse usage.

7. New pathway aligned with Eudoria Street western edge for increased access.
8. Parallel car parking to carriageways on Eudoria Street to encourage visitors to stop and access the wetlands and the picnic amenities.
9. Bollards to restrict access into the Park.
10. Removal of temporary fence adjacent to the existing path.
11. Bench seating to encourage bird viewing across the islands. Manage vegetation to optimise views.
12. Rehabilitation using native wetland species potentially undertaken in collaboration with the FoMCP.
13. Picnic area with barbeque and bin facilities and shade structure.
14. Irrigated turf to main active node.
15. Custom built play equipment – salvaged timber bird viewing platform with climbing opportunities and slide exit incorporating interpretation. Bench seating for parents to watch over children will be included adjacent to each play area.
16. Play equipment – rope climbing structure with small perching locations with exaggerated dry cracked columns which could double as seating or stepping stones.
17. Mass native planting and existing trees to be retained.
18. Seasonal signage to highlight awareness of local fauna movement.

## Place Interpretation

### Primary Theme

Mary Carroll Park teaches us why looking after our environment is very important.

### Key Messages

It is very important to care for our wetlands.

Mary Carroll Park is one of few remaining urban wetlands on the Swan Coastal Plain.

Mary Carroll Park is recognised as a place of significant conservation value.

### Storylines and Form of Interpretation

Whadjuk Six Seasons: Incorporated into the large seating area. Also incorporate information about responding to the land, living and traditional activities. This will link to the Welcome to Country artwork.

Mary Carroll Park is Bush Forever Site – 124, is a Conservation Category Wetland and is internationally recognised: Key facts could be incorporated into the pavement central to the outdoor classroom.

Plants found at the wetland are both native and introduced: Tree/leaf rubbings – these could be done as classroom activities but then also incorporated into the pavement, signage graphics and pattern. Common, scientific and Aboriginal names incorporated into signage. Each information point should reference the Aboriginal season it is most likely to flower or fruit in.

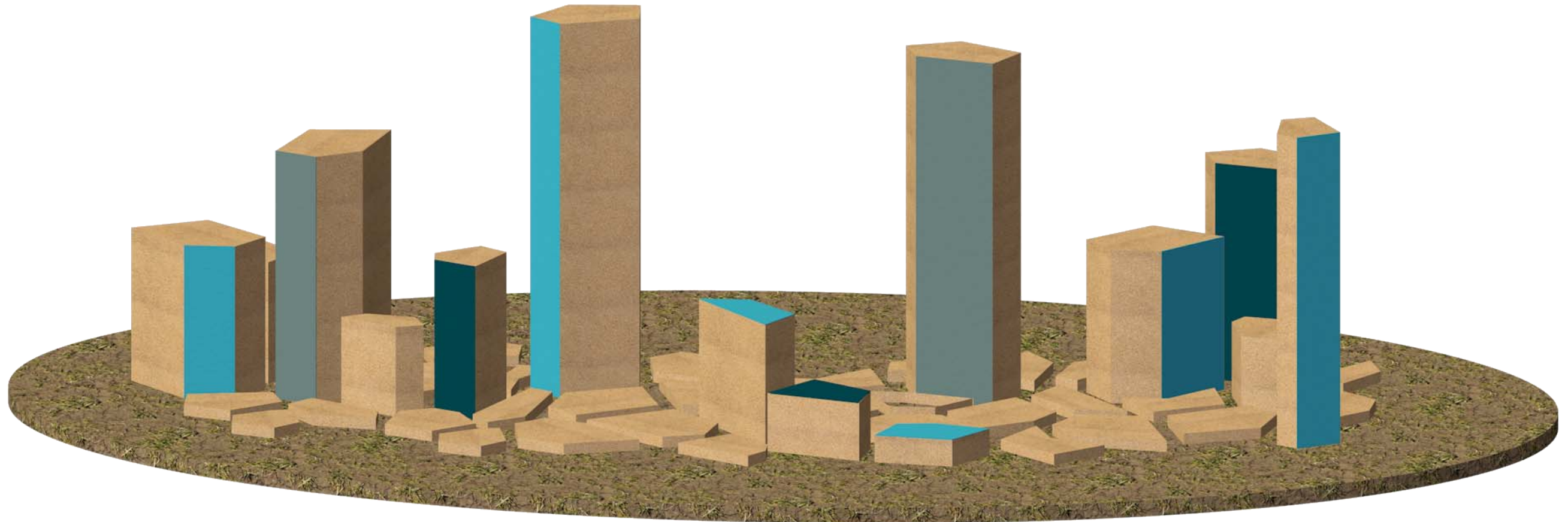
History shows us that not looking after our wetlands properly has detrimental effects (ie past incidences/events – Botulism etc). Could

be represented as a timeline and embedded in the existing footpath joining the hub deck and southern entry in the form of simple equations. i.e. 1997: High Fertiliser Use + Low Rain Fall = 1000 sick birds or 2007: Lots of helping hands – lots of rubbish = healthy wetland.

We manage our habitats to benefit both people and wildlife: Incorporate large walkable scale Swan coastal plain map within the paving at the southern major entry node to show where the wetland sits in relation to tangible everyday features ie the Perth city, the Swan and Canning Rivers and other significant wetlands.

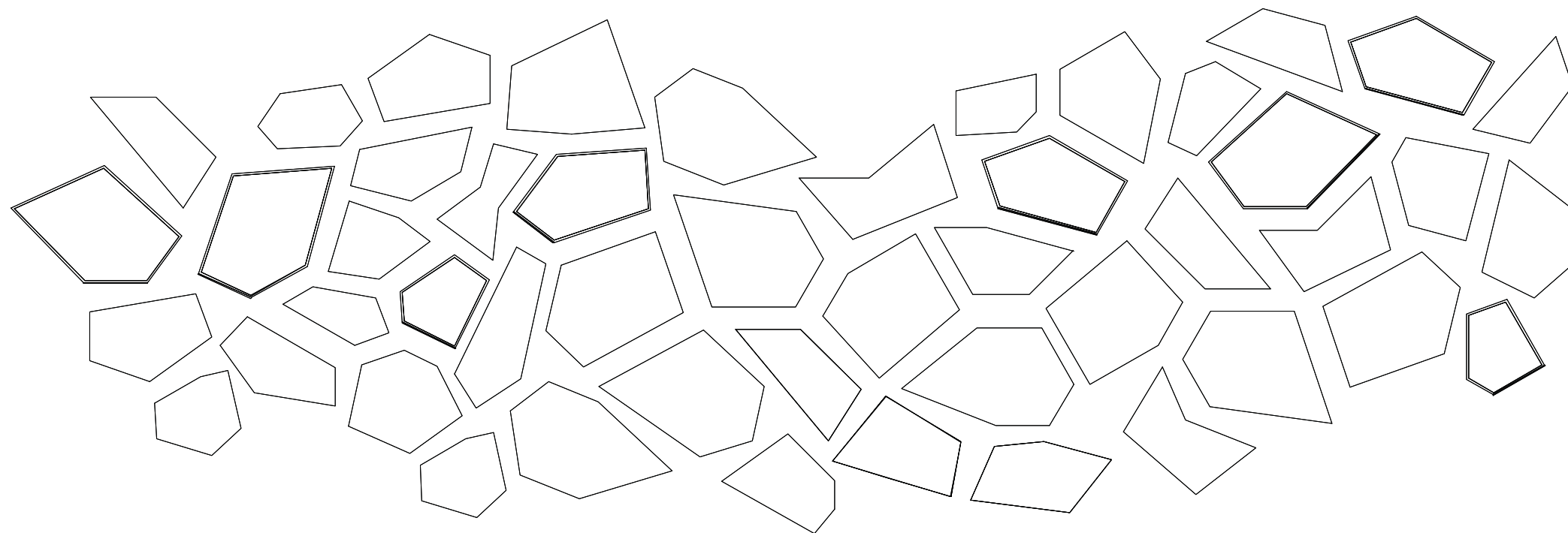
Seasonal Fauna Migration and Movement: Install signs to highlight key times turtles and birds use our roads and footpaths to move around the area. Refer to the Aboriginal seasons in which these are likely to occur.





## **dry cracked earth interactive sculpture**

Possible concepts associated with this sculptural form include interpretation, information, nature play, audio or seating.





# Area 3 - Causeway Connection



## Role of the Area

Recreational circuit through the wetland water body, nature play and observation. Features include nature play, formal and informal paths, seating, interpretive art and signage, bird hides, large group picnic facilities (including large picnic table and shelter), on-street parking and new bridges including an iconic suspension bridge.

## Design Elements

1. Replace existing bridge on causeway with suspension boardwalk structure to avoid construction in acid sulphate soils.
2. Integrate seating height walls constructed of rammed earth with interpretation stencilling and bench seating for contemplation and bird watching.
3. Suspension bridge – incorporate a suspension bridge to span the causeway to the main wetland fringe. The structure should be of similar materials to other boardwalk structures and include various width bird roosting / resting locations extending off the structure.
4. Custom designed bird roosting vertical artworks – install in areas requiring rehabilitation and above the perched wetland membrane.
5. Picnic area with barbeque and bin facilities and shade structure and a custom built table to cater for large groups and seat 20 people.
6. Nature Play Area 1 Fauna Education – Incorporate in the nature play area through equipment and games including: Sound points – listen to different croaks and calls and tracks set in the gravel path in the relevant places where they live, ie frog – near the reeds, reptiles - further in the

dryer areas. Also reference stories of different Aboriginal connections to some of these animals. These should be sited around sand play areas and salvaged natural materials.

7. Nature Play Area 2 Migratory Birds – a giant compass with directional interpretation located at ground level set in a natural landscape setting.
8. Nature Play Area 3 Wetland Plants – retrofit the existing drainage channel off Verna Street to be a living stream with specific plant species, creating a natural water based play environment. Integrate subtle interpretive signage to explain the significance of the plants.
9. Nature Play Area 4 Noongar Family – Commission an artist to sculpt a traditional Noongar family (2 adults and 2 children) sitting around a camp fire on salvaged logs. Spaces on the logs should be available for children to sit next to the sculpture and interact with the concept. Key plants which were used could be planted around the site with small signs to explain their relevance.
10. Nature Play Area 5 Bird Sanctuary - Commission an artist to design and manufacture giant cut out bird species which use the bird sanctuary as nesting and foraging grounds. These sculptures could be scattered in the planting and attached to the existing fence. Interpretive signage could be integrated to explain the areas within the wetland which are designated as bird sanctuary and the reasons why access is restricted.
11. Proposed light coloured pavement areas in shapes reflecting the wetland earth with paving pattern theme to reflect dry cracked earth defining a minor node within the Park, with minor directional signage.

12. New pathway meandering through existing trees in turf to connect southern major activity node with nature play network.
13. Parallel car parking to carriageways on Verna Street to encourage visitors to stop and access the wetlands and the picnic amenities.
14. Small entry node to enhance the pedestrian visitor experience of arrival in the wetland. Minor directional signage to highlight the activities and amenities available in the Park.
15. Bollards to restrict access into the wetland environment.
16. Removal of temporary fence adjacent to the existing path.
17. Bench seating to encourage bird viewing across the islands.
18. Rehabilitation using native wetland species potentially undertaken in collaboration with the FoMCP.
19. Irrigated turf to main active node.
20. Mass native planting and existing trees to be retained.

## Place Interpretation

### Primary Theme

Mary Carroll Park teaches us why looking after our environment is important.

### Key Messages

Mary Carroll Park wetlands are an important place for water birds.

### Storylines and Form of Interpretation

Mary Carroll Park is a very important breeding, roosting and seasonal site for a range of local and international waterbirds: Locate information about birds nesting/roosting/loafing and the types of bird species with pictures of the birds on the suspension bridge and at each node either side of the bridge. Each bird information point should reference the Aboriginal season it is most likely seen in.

Birds are an important aspect of the wetland ecosystem and function: Have giant cut out

birds and bugs sited on the islands where rehabilitation has occurred. Also locate cut out giant birds adjacent to the Bird Sanctuary area to highlight that this area is for the birds.

Food chain ideas: Incorporate signage on the walls around the causeway with food chains and the way in which all different species types interact.

In addition to waterbirds, MCP supports songbirds, reptiles, amphibians and turtles. Incorporate in the nature play area through equipment and games including: Sound points to listen to different croaks and calls and tracks set in the gravel path in the relevant places where they live ie frogs near the reeds, and reptiles in dryer areas. Also reference stories of different Aboriginal connections to some of these animals.

Local Migratory patterns: Locate a giant compass with directional interpretation in a nature play area conveying which way

particular species travel with distances and destinations to provide a 'Global Concept'.

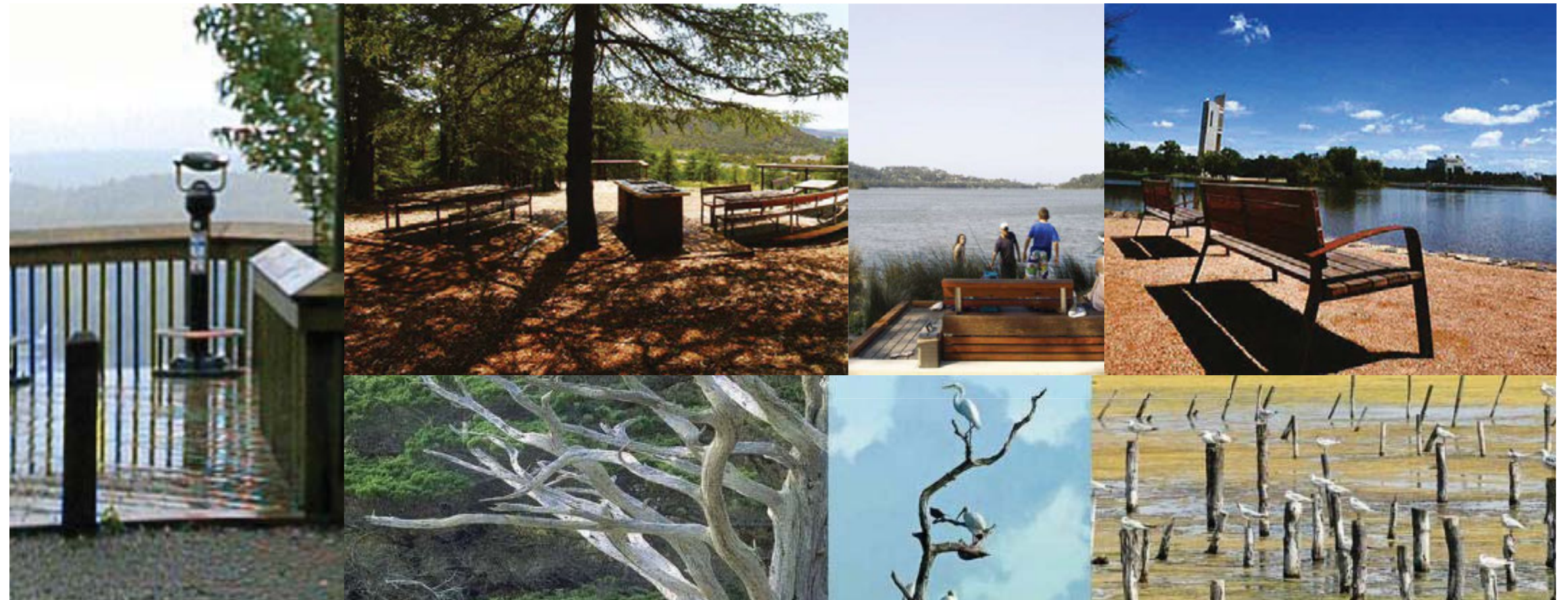
Identify significant wetland plants: Plant specific species within the existing drainage channel and convert into a living stream which could also be accessed for water play by children.

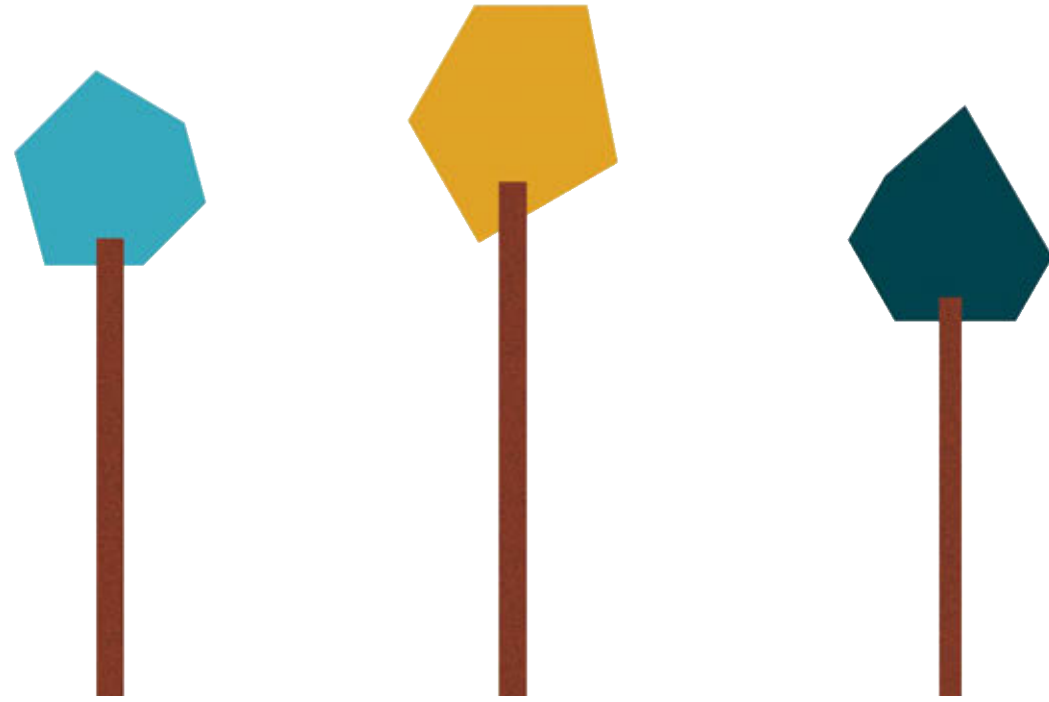
Aboriginal diet and food chain: Recognise the role of the wetland and how different species were used for food and medicine. Incorporate a traditional Noongar family sculpture sitting around a camp fire on logs with spaces for children to join in. Key plants which were used could be planted around the site with small signs to explain their relevance. This nature play area should also reference the Aboriginal season traditional people visited the wetland environment.

Classroom Activities: All classroom activities should be linked to the National Curriculum.

Signage with social media references to a Facebook / Twitter account for migratory birds to provide kids/community with ongoing updates on what is happening with the birds at MCP. There could be QR codes on the signs which link to the social media account as well as other sources such as Birdlife Australia.

Students could help update the social media sites as a project; a different class each term could undertake the work. Students would monitor and research the migratory and behaviour patterns of the birds and then display this creatively on the social media account.







# Area 4 - Eudoria to Croft Street Connection



## Role of Area

Recreational circuit connection between the core recreational node and May Street. Features include formal and informal paths, interpretive art and signage, seating and drink fountain.

## Design Elements

1. Small entry node at Croft Street to enhance the pedestrian visitor experience of arrival in the wetland. Major directional signage to highlight the activities and amenities available in the Park including bench seating and a drink fountain.
2. Proposed dark coloured pavement areas in shapes reflecting the wetland earth with paving pattern theme to reflect dry cracked earth defining a major node within the Park.
3. New pathway along May Street connecting Eudoria Street to Croft Street on southern side of road. The path should meander to retain existing street trees.
4. Parallel car parking to carriageways on May Street to encourage visitors to stop and access the wetlands and the picnic amenities.
5. Redesign existing path to weave around proposed new clusters of wetland tree species and mass planting.
6. Redesign existing path to weave around proposed new clusters of wetland tree species and mass planting. Incorporate interpretation about early European settlement uses.
7. Redesign existing path to weave around proposed new clusters of wetland tree species and mass planting. Incorporate interpretation about fire management.

8. Redesign existing path to weave around proposed new clusters of wetland tree species and mass planting. Incorporate interpretation about the market garden past use.
9. Integrate a meandering gravel path up the hill to the existing mature Eucalypt specimens.
10. Integrate a vehicle gate to enable emergency and maintenance vehicle access.
11. Retain temporary fence adjacent to the existing path until vegetation has grown to satisfactory size.
12. Rehabilitation using native wetland species potentially undertaken in collaboration with the FoMCP.
13. Mass native planting and existing trees to be retained.

## Place Interpretation

### Primary Theme

Mary Carroll Park teaches us about our history, how our area developed and why our city is the way it is today.

### Key Messages

We can learn a lot about the development of Gosnells and the perceptions and attitudes of settlers in the region towards wetlands.

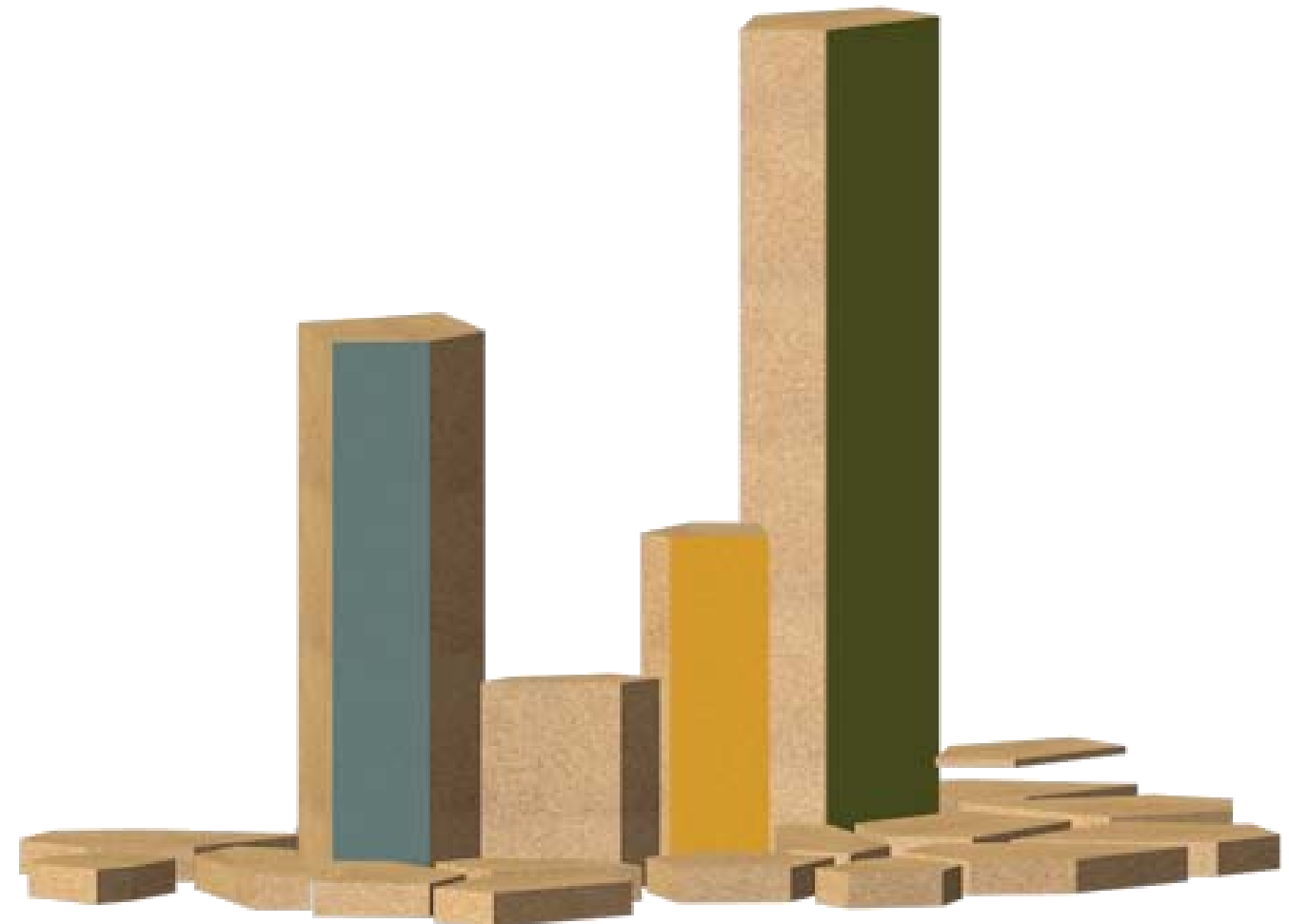
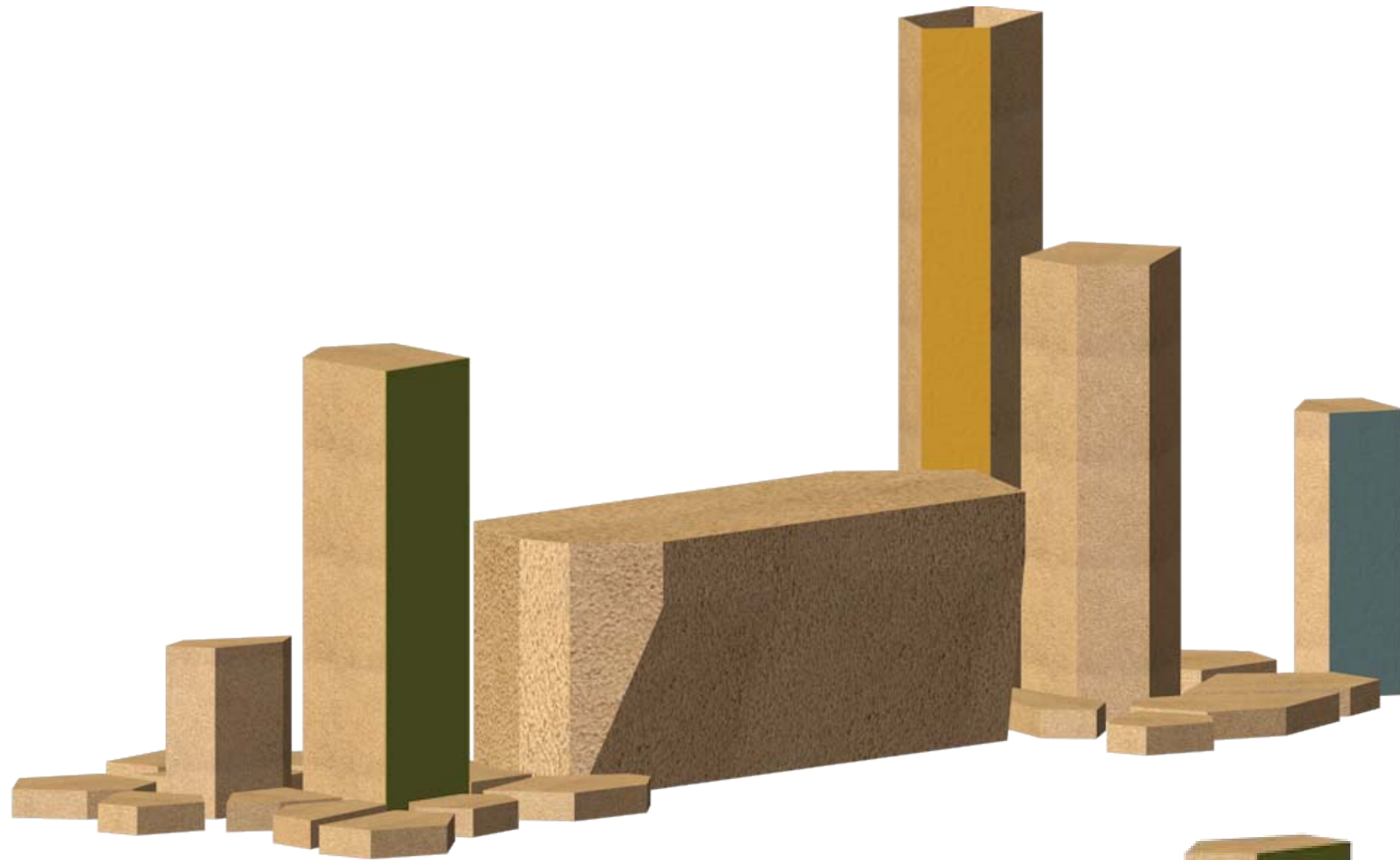
### Storylines and Form of Interpretation

**Early European Settlement Uses:** There have been many changes in attitudes to wetlands, how to conserve them and why they are important. Name the uses of the wetland and year it was that use through exaggerated dry cracked columns which could double as seating or stepping stones.

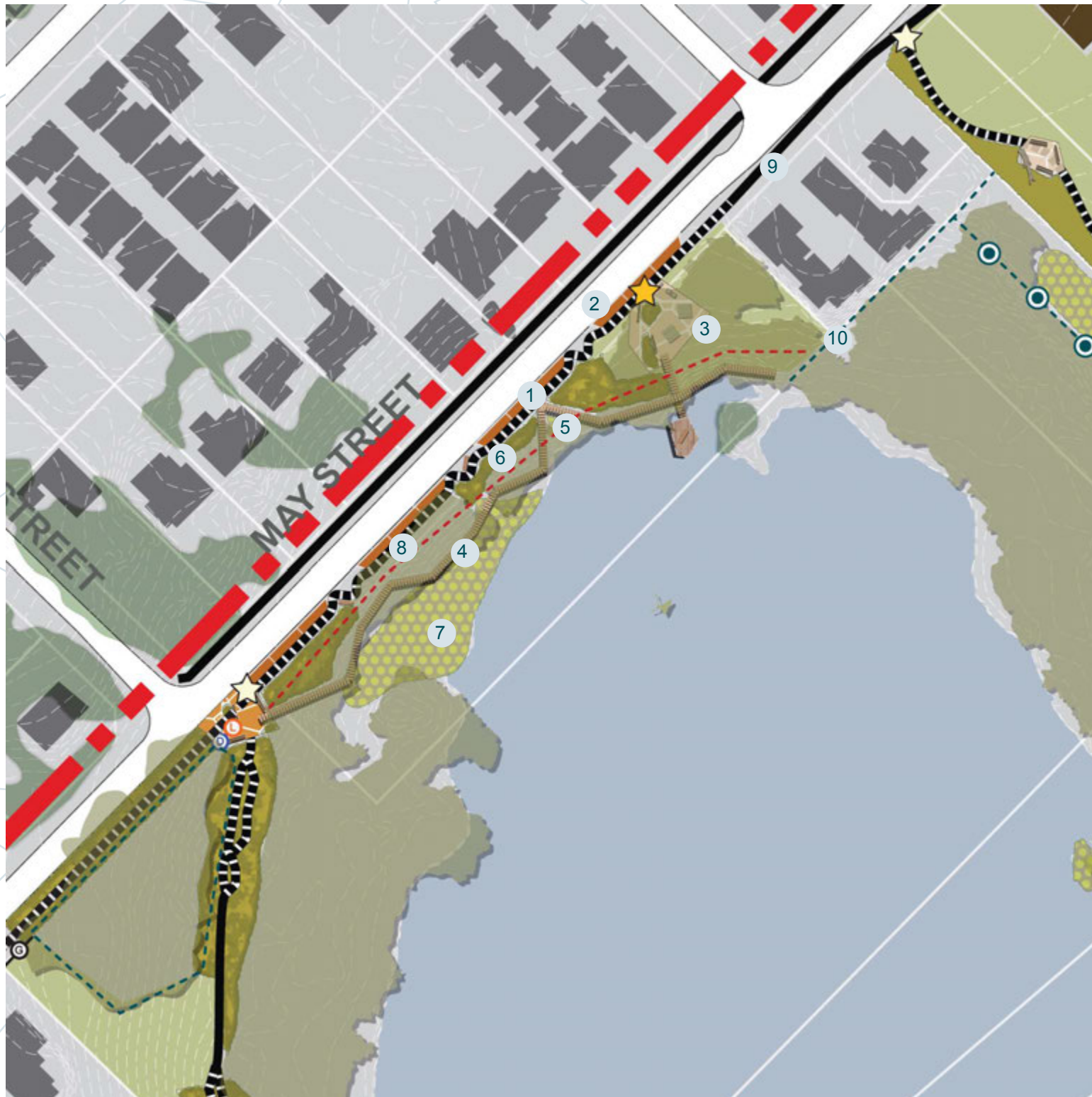
**Fire Management:** Explain why the area has relatively few trees and requires a break

between houses and wetland vegetation. Represent the years fires have occurred in the wetland and the Aboriginal season it occurred through exaggerated dry cracked columns which could double as seating or stepping stones.

Market Garden: Mature fruit trees still survive in this area. A good link to the market gardens and European settlement include small name plates at the base of each remnant market garden species. Plant additional original market garden species to the west of the wetland and name these also. Old fence posts in the wetland should also be referenced.



# Area 5 - May Street Activation



## Role of Area

Local activity node. Features include paths, on-street parking, interpretive art and signage, seating, picnic facilities and boardwalks.

## Design Elements

1. Parallel car parking to carriageways on May Street to encourage visitors to stop and access the wetlands and the picnic amenities. Random street tree planting of Melaleuca tree species and rushes to strengthen the street's connection with the wetland.
2. Seasonal signage to highlight awareness of local fauna movement.
3. Picnic area nestled under existing Melaleuca tree species on pavement with barbeque and bin facilities and shade structure and a number of tables. Locate minor directional signage for wayfinding purposes.
4. Construction of boardwalk structure to connect the Croft Street node and May Street picnic location.
5. Removal of temporary fence only when the boardwalk is constructed, as this structure will deter vehicular access to the wetland.
6. Mass native planting to further strengthen the wetland fringe vegetation.
7. Rehabilitation using native wetland species potentially undertaken in collaboration with the FoMCP.

8. New pathway aligned with May Street southern edge for increased access to the wetlands. Incorporate interpretation about the wetland being a continual balancing act.

9. Existing footpath to be retained.

10. Fire access.

## Place Interpretation

### Primary Theme

Mary Carroll Park teaches us why looking after our environment is important.

### Key Messages

Wetlands have unique processes to keep them healthy.

### Storylines and Form of Interpretation

It is important, normal and healthy for wetlands to dry out in summer: Locate on the viewing platform an interactive sign inspired by a 'fire danger rating' sign which indicates the depth of water in the wetland in relation to the season and what the water level should be for that time of the year. Each rating could describe the impacts of the current water level on the wetland ecology and its wildlife. ie.

'Just Right for Summer' this wetland is dry and healthy. The dry time allows for bacteria to be killed. Perched wetlands are very high in biodiversity as the plants and animals who live here have to be able to survive in both wet and dry environments.

The signage could be altered by the City of Gosnells staff depending on the season or could be managed by school students as a project.

The wetland is a continual balancing act with fluctuations in water, seasonal variability, outside influences: Embed text into the new path connection along May Street describing the different elements and issues that affect MCP function.

Perched wetlands: Fill with storm water in winter and then dry out in the summer. Interpretation along the boardwalk about turtles, perched wetlands and biophysical elements such as bacteria.

Seasonal fauna migration and movement: Signage to highlight key times turtles and birds use our roads and footpaths to move around the area. Refer to the Aboriginal seasons in which these are likely to occur.



# Area 6 - Gosnells Primary School Learning Centre



## Role of Area

Nature observation in outdoor classrooms and urban linkage. Features include paths, fitness circuit, bench seating, drink fountain, group gathering spaces for outdoor learning, interpretive art and signage, bird hide, boardwalk and viewing deck.

## Design Elements

1. Minor directional signage for school connections to the wetland environment and facilities and amenities within.
2. New footpath connecting May Street to Clara Street with a series of small gathering points for groups up to 10 people. Each seating area would have a couple of bench seats and some salvaged logs and be surrounded by new tree plantings in mass planting. A fitness circuit encourages broader community use of the area.
3. Small entry node at Clara Street to provide school entry to wetland and alternate drop off / pick up location. Entry and directional signage to highlight the activities and amenities available in the Park including bench seating and a drink fountain. Incorporate text about Mary Carroll and her role at the school and influence in the pavement and possibly reference family names spanning across the 33 years who were in Mrs Mary Carroll's classes.
4. Construct boardwalk out into the wetland environment for school students to access as part of lessons and the educational program. An interpretive timeline will be incorporated on the edge of the boardwalk.
5. Install a lockable gate that is to be managed by the City of Gosnells and the Gosnells Primary School to limit access.

6. Construct an outdoor classroom viewing deck to cater for maximum 25 people. The western face of the viewing deck should have a bird hide wall constructed (max 1500mm height) with slots at various heights for bird watching. Incorporate a water measure meter within the structure so that students can monitor the water levels.
7. Celebrate and reinforce the connection of the school with the wetland through interpretive artwork attached to the existing bird sanctuary fence.
8. Existing path to remain.
9. Plant street trees to Percy Street and the wetland side of Verna Street and apply stencil artwork and signage to paths to formalise the recreational circuit around the wetland.

## Place Interpretation

### Primary Theme

Mary Carroll Park teaches us about our history, how our area developed and why our City is the way it is today.

Mary Carroll Park instils in us the strong personal and community connection the school has with the environment.

### Key Messages

We can learn a lot about the development of Gosnells.

Mary Carroll Park was named in 1971 in honour of Mrs Mary Carroll.

The Gosnells Primary School has always had a strong connection to Mary Carroll Park in using the Park as an outdoor classroom.

The Gosnells Primary School and its students have a long and interesting association with Mary Carroll Park.

### Storylines and Form of Interpretation

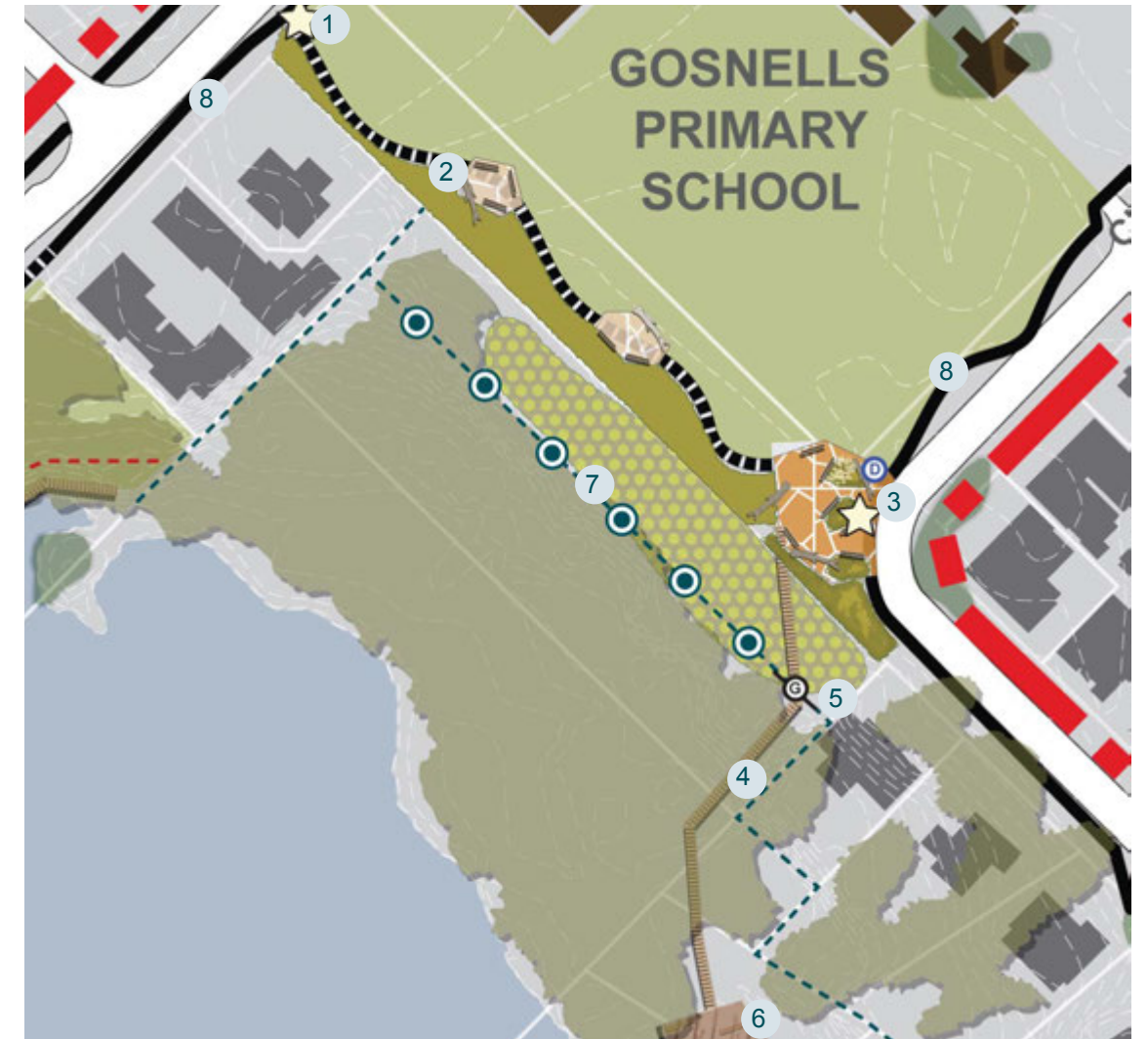
The Park tells us stories about why Gosnells developed the way it did including market gardens, the school, soils, community, drainage and water. It also tells us what was here before and how we can develop in the future. Include a timeline on the edge of the boardwalk. Walk backwards through time so present day at the top, down to the past at the water.

Mrs Mary Carroll was a well-known teacher at Gosnells Primary School in the first half of the twentieth century. She taught for over 33 years. Mrs Carroll used the wetland as part of her teaching activities. Include children's artwork on the fence (facilitated by an artist), possibly as flat metal sculptures. Also include the name Mary Carroll Park to reinforce the link between the school and the wetland.

Mrs Mary Carroll was passionate about looking after the wetland and for good reason. Establish the living classroom theme. Incorporate text about Mary Carroll and her role at the school and influence in the pavement. Include family names spanning across the 33 years who were in Mrs Mary Carroll's classes.

Activities including Rangers programs including testing in progress: To display current activities which are occurring including scientific related data and links to the National Curriculum. Integrate a water measure in the wetland at the end of the viewing platform for students to record the water levels.

Gosnells Primary School Projects: Instigate a 'Mary Carroll Award' at the school for a student who shows dedication to conservation, natural area management or suitability. Research your or someone else family's connection to the Gosnells area.





INTERACTIVE STRUCTURE.  
ROTATING SECTIONS TO  
SHOW SEASONAL INFORMATION



FLOOR BASED  
INTERPRETATION/  
SIGNAGE



# Area 7 - Gosnells Primary School Entrance

## Role of the Area

Strengthen Gosnells Town Centre connection to the Mary Carroll Park precinct and express community and Gosnells Primary School's enduring connection with the Park. Features include a gathering area, seating, entry statement, interpretive art and signage, school garden and enhancements at bus stop.

## Design Elements

1. Highlight corner as a major entry node to the school and wetland precinct through the pavement treatment to the corner of Hicks and May Street. Display the botanical drawings to reference the Nature Study Movement within the pavement. Provide minor directional signage to be read by pedestrians and motorists.

2. Set school fence to back of paved area to create a larger gathering area and retain all existing trees.
3. Integrate bench seating under existing trees along May Street edge for drop off / pick up point.
4. Repaint existing bus shelter with Mary Carroll Park colour palette.
5. Set School entry point back from Hicks Street and incorporate bench seating for students when waiting for the bus.
6. Incorporate exaggerated dry cracked columns to a maximum height of 450mm with interpretation about the activities undertaken at the school during the Nature Study Movement with minor directional signage.

## Place Interpretation

### Primary Theme

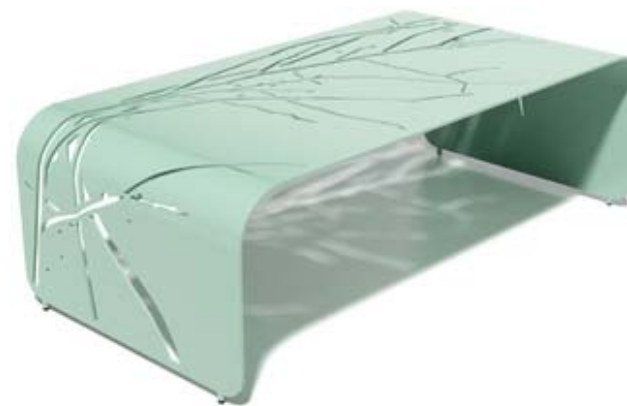
Mary Carroll Park teaches us about our history, how our area developed and why our city is the way it is today.

### Key Messages

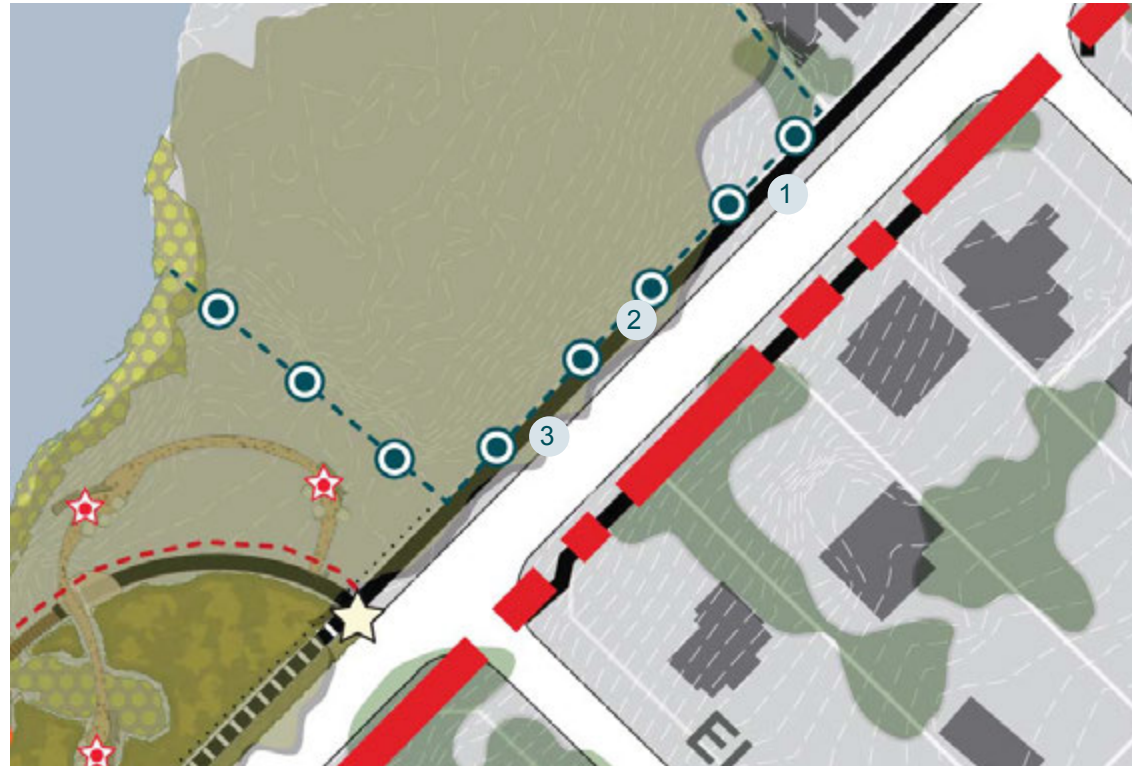
The school was once a model for Nature Study.

### Storylines and Form of Interpretation

The Gosnells Primary School was once as a headquarters for Nature Study Movement, activities that historically happened at the school – conservation, nature study, flower planting, agriculture etc. Display the botanical drawings undertaken by children at the school (if available) during the early part of the 1900's within the pavement. Name the activities which once occurred at the school and year it was through exaggerated dry cracked columns which could double as seating or stepping stones adjacent to the bus shelter.



# Area 8 - Bird Sanctuary Education



## Role of the Area

Promote awareness of the highly protected natural asset (fenced). Features include environmental interpretation on fencing and paths, and shade tree planting clusters to improve landscape transition.

## Design Elements

1. Plant clusters of trees along the wetland side of Verna Street to visually extend and connect the wetland to the urban environment.
2. Install fence artwork along the footpath to provide information about the significance of the bird sanctuary.
3. Existing footpath to remain.

3. Existing footpath to remain.

## Place Interpretation

### Primary Theme

Mary Carroll Park teaches us why looking after our environment is important.

### Key Messages

Mary Carroll Park is an important place for water birds.

Mary Carroll Park is one of few remaining wetlands on the Swan Coastal Plain.

### Storylines and Form of Interpretation

The bird sanctuary is vital to the fauna that migrate to Mary Carroll Park. The sanctuary

provides important waterbird breeding habitat, and is a very important regional summer refuge as smaller wetlands in Perth dry out. Information about why the Bird Sanctuary is there and maybe incorporate some public art (metalwork) into the fence similar to the Gosnells Primary School fence interface.



# Area 9 - James Street Activation



## Role of the Area

A major entry and activity node to the smaller wetland recreational circuit. Features include paths, on-street parking, picnic facilities, a shelter, bird hide, interpretive art and signage, boardwalk and botanical garden.

## Design Elements

1. Highlight corner of James Street as a major entry node to the western entry to the wetland precinct and highlight other amenities and facilities in the Park. Locate major directional signage for pedestrians and motorists. All new pavement and built infrastructure should be designed around existing trees.
2. Incorporate picnic facilities including tables, barbeque, drink fountains, bins and shade structures for local community gatherings.
3. Incorporate exaggerated dry cracked columns to a maximum height of 450mm with interpretation about the achievements within the wetlands by the various community groups.
4. Parallel car parking to carriageways on James Street to encourage visitors to stop and access the wetlands and the picnic amenities. Formal street tree planting of upland tree species to strengthen the street connection with the wetland.
5. Install new footpath connections on James Street on the Eastern road side.
6. Seasonal signage to highlight awareness of local fauna movement.
7. Existing trees and dry land grass will be retained to assist in fire management for adjacent properties.
8. Construct a boardwalk through the two vegetation types and over the wetland.

9. Retain and protect existing Water Corporation infrastructure.

## Place Interpretation

### Primary Theme

Mary Carroll Park instils in us the strong personal and community connection which many people have to the area.

### Key Messages

Lots of work has been done to Mary Carroll Park over the years to help protect and preserve it.

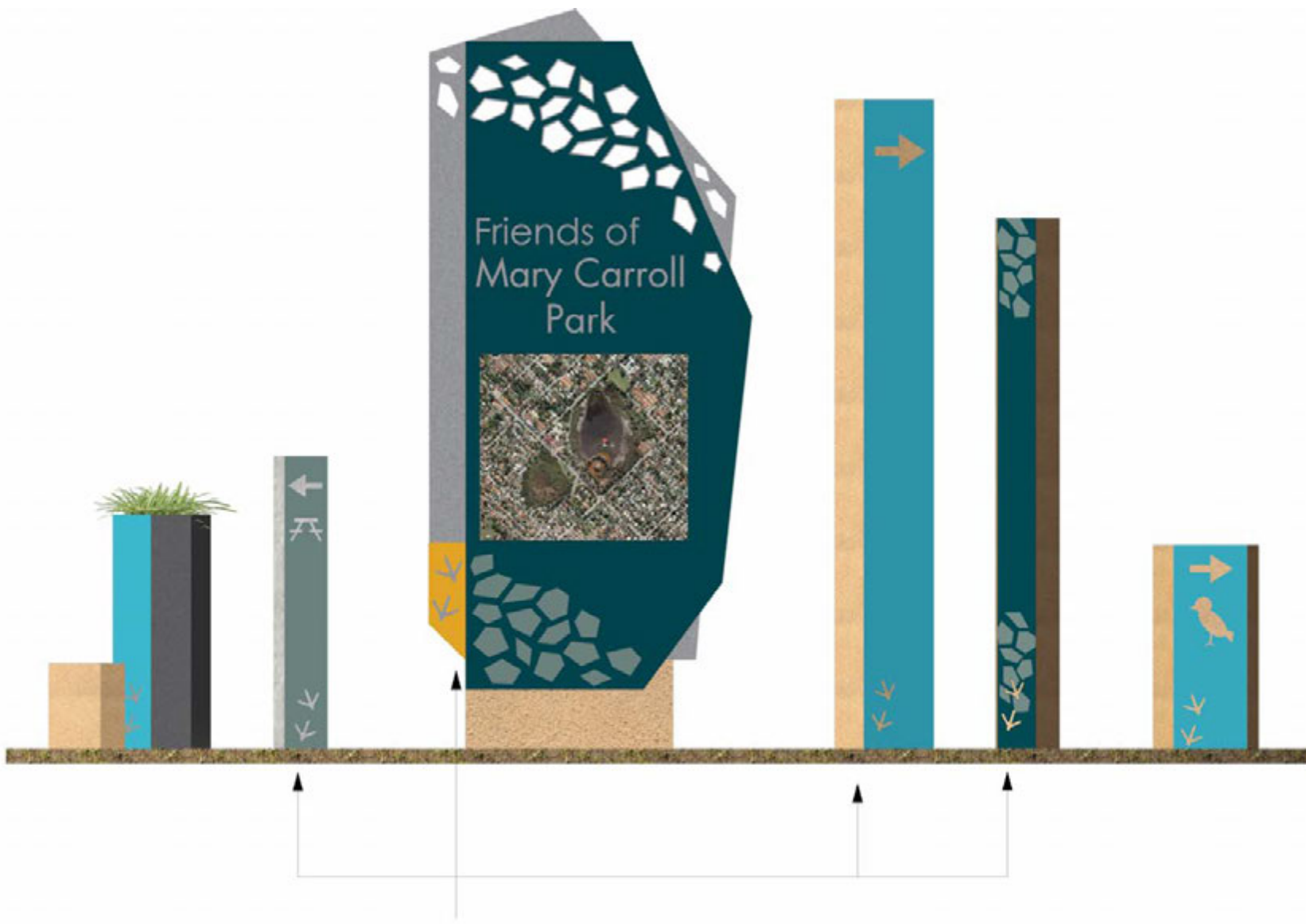
### Storylines and Form of Interpretation

Community groups including Friends of Mary Carroll Park (FoMCP), Working Group, School, City of Gosnells. Talk about FoMCP. Include some form of dynamic signage that updates the public about the FoMCP activities around the Park.

We can all help care for Mary Carroll Park and it is important that we do: Include symbols embedded in the pavement of opportunities and ways which people can help to care including join a community group, do not litter ideas. These symbols could be generated from sketches done by students at Gosnells Primary School and interpreted by an artist.

Highlight community groups and schools achievements with Mary Carroll Park over the years including management, revegetation, and the Rangers program: Name the achievements which occurred at the wetland and year it was through exaggerated dry cracked columns which could double as seating or stepping stones.

Seasonal Fauna Migration and Movement: Signage to highlight key times turtles and birds use our roads and footpaths to move around the area. Refer to the Noongar seasons in which these are likely to occur.



BIRD FOOTPRINTS CAN BE LASER CUT INTO ANY COLOURED PANEL APPLIED TO THE VARIOUS STRUCTURES.

AS THE CONCEPT AND COLOUR PALETTE ALREADY HELP THE SIGN TO SIT TOGETHER AS A FAMILY IT MAY NOT BE NECESSARY TO APPLY FOOTPRINTS TO ALL PANELS WHEN IN CLUSTERS.



# Area 10 - Barcombe Way Connections



## Role of the Area

A local activity node (providing direct views of the wetland water body) and improved urban transition. Features include paths, seating, interpretive art and signage and small gathering spaces.

## Design Elements

1. Small entry node will be located at the intersection of the path and Barcombe Way (West) to enhance the pedestrian visitor experience of arrival to the wetland. Minor directional signage to highlight the activities and amenities available in the Park including bench seating.
2. Existing footpath to remain.
3. To assist in fire management, between the path and residential dwellings will be mulch only.
4. Japanese Pepper species and other weed species will be removed by the City of Gosnells and a revegetation program established. Appropriate local species and tree species will be planted through the revegetation program. A local community group or school group could be involved in this revegetation program.
5. Rehabilitation using native wetland species potentially undertaken in collaboration with the Friends of Mary Carroll Park.
6. The existing Willow tree located on the edge of the wetland will be removed by the City of Gosnells.
7. A hard edge low terrace wall will be designed to provide a physical barrier between the sensitive wetland environment and the public. This wall will incorporate interpretive signage about the Sacred Ibis. A paved area will be incorporated into the design with simple bench seating to provide opportunity for contemplation and viewing across the wetland.
8. Residential Edge – Interpretive signage and cluster tree planting in mulch will be implemented to assist in activating this connector path. The interpretation will include a series of embedded cross sections detailing the information about different types of wetland geology into the pavement edge.
9. Residential Edge – Interpretive signage and cluster tree planting in mulch will be implemented to assist in activating this connector path. The interpretation will celebrate and inform visitors of the vegetation diversity found within the wetland environment.
10. Seasonal road painting treatment to highlight awareness of local fauna movement.

## Place Interpretation

### Primary Theme

Mary Carroll Park teaches us why looking after our environment is very important.

### Key Messages

Wetlands have unique processes to keep them healthy.

Mary Carroll Park is an important place for water birds.

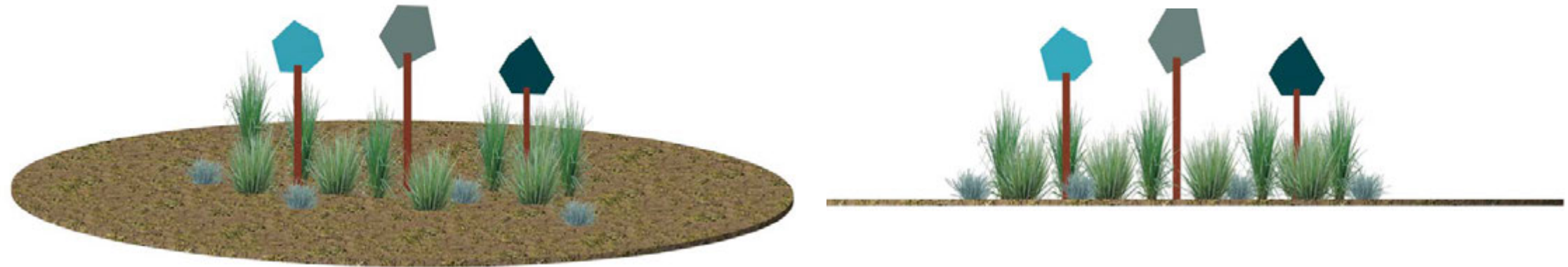
### Storylines and Form of Interpretation

Discuss the relationship between the two wetlands: The smaller wetland is not a perched wetland and dries out before the bigger wetland. Embed cross section information about the different types of wetland geology into the pavement edge.

Vegetation Diversity: Interpret upland vegetation and demonstrate different forms within the landscape and flora. Grass Trees, Woody Pear and Banksia are all evident here. Exaggerate the different flowering or fruiting forms found in this vegetation in the form of cut out corten steel shapes with names of species. Reference Noongar six seasons as well by naming the season the species fruits or flowers.

MCP is recognised as one of the largest roosting sites for Sacred Ibis in the Perth Metropolitan area. Play on the name 'Sacred' Ibis and its specialness/importance to the wetland and embed this interpretation within the low wall structure.

Seasonal Fauna Migration and Movement: Signage to highlight key times turtles and birds use our roads and footpaths to move around the area. Refer to the Aboriginal seasons in which these are likely to occur.



# Area 11 - Shipton Street Activation



## Role of the Area

A local activity node and improved urban transition. Features include picnic facilities, drinking fountain, interpretive art and signage, shelter, on-street parking, paths and a gathering space.

## Design Elements

1. Proposed new footpath connection with minor directional signage from Shipton Street footpath network.
2. Existing footpath to remain.
3. Local Community Gathering - Picnic area with barbeque, drinking fountain, bins and shade structures. Local stories about MCP will be embedded in the pavement and in dry cracked earth sculptures.
4. Mass native planting and existing trees to be retained.
5. Parallel car parking to carriageways on Shipton Street to encourage visitors to stop and access the wetlands and the picnic amenities.
6. Proposed light coloured pavement areas in shapes reflecting the wetland earth with paving pattern theme to reflect dry cracked earth defining a minor node within the Park.
7. Existing trees will be retained and integrated into the proposed picnic area and existing dryland grass will be retained to assist in fire management for adjacent properties.
8. Retain and protect existing Water Corporation infrastructure.

## Place Interpretation

### Primary Theme

Mary Carroll Park instils in us the strong personal and community connection which many people have to the area.

### Key Messages

Many visitors and users of the Park have different perceptions and appreciations for the Park, all stemmed from differing experiences.

### Storylines and Form of Interpretation

Story telling: Embed personal quotes from local residents and Aboriginal community members about the Park and their experiences within the paving and in dry cracked earth sculptures.



# Area 12 - James Street Wetland Management

## Role of the Area

Unobstructed views of the wetland water body area and access for environmental management. Features include boardwalk, interpretive art and signage, seating and viewing platform.

## Design Elements

1. Viewing platform to provide important access to manage the weed species within the wetland. Provide bench seating and a bird hide wall (1500mm maximum height) with viewing slots to the northern face of the platform.

2. The City of Gosnells in association with the Friends of Mary Carroll Park (FoMCP) will undertake a removal and revegetation program to remove nominated areas of Typha species north of the boardwalk structure. Appropriate local species and tree species will be planted through the revegetation program.
3. The City of Gosnells in association with the FoMCP will manage the existing Typha species to south of the boardwalk structure.

## Place Interpretation

### Primary Theme

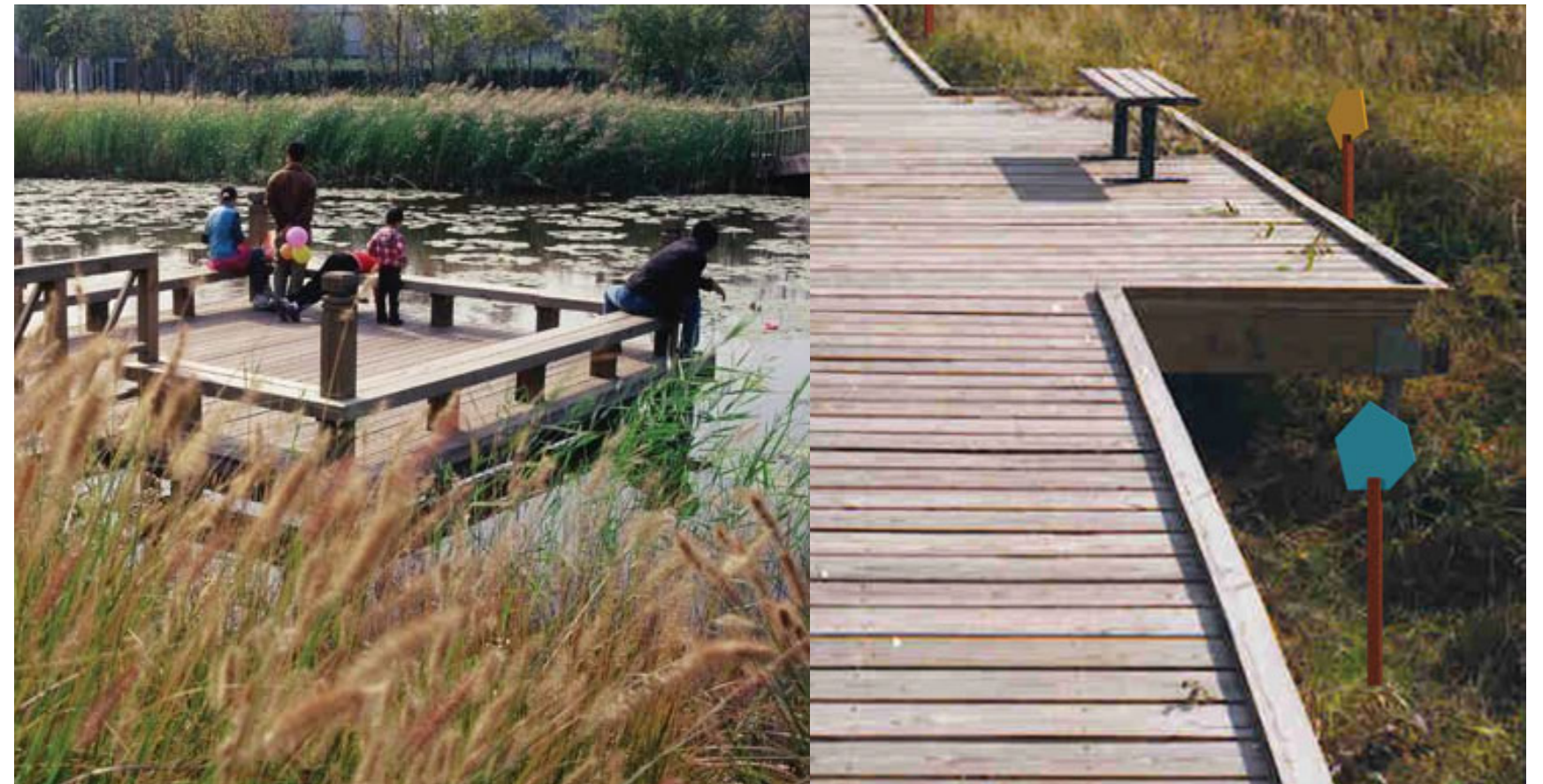
Mary Carroll Park teaches us why looking after our environment is important.

### Key Messages

Our wetlands are diverse places with many complex relationships between flora and fauna.

### Storylines and Form of Interpretation

Short and long term management of the Typha sp on the boardwalk: Include interpretive signage on the viewing platform which highlights key issues including weed species impact on native species and Swan roosting habitat in weed species due to lack of native habitat.



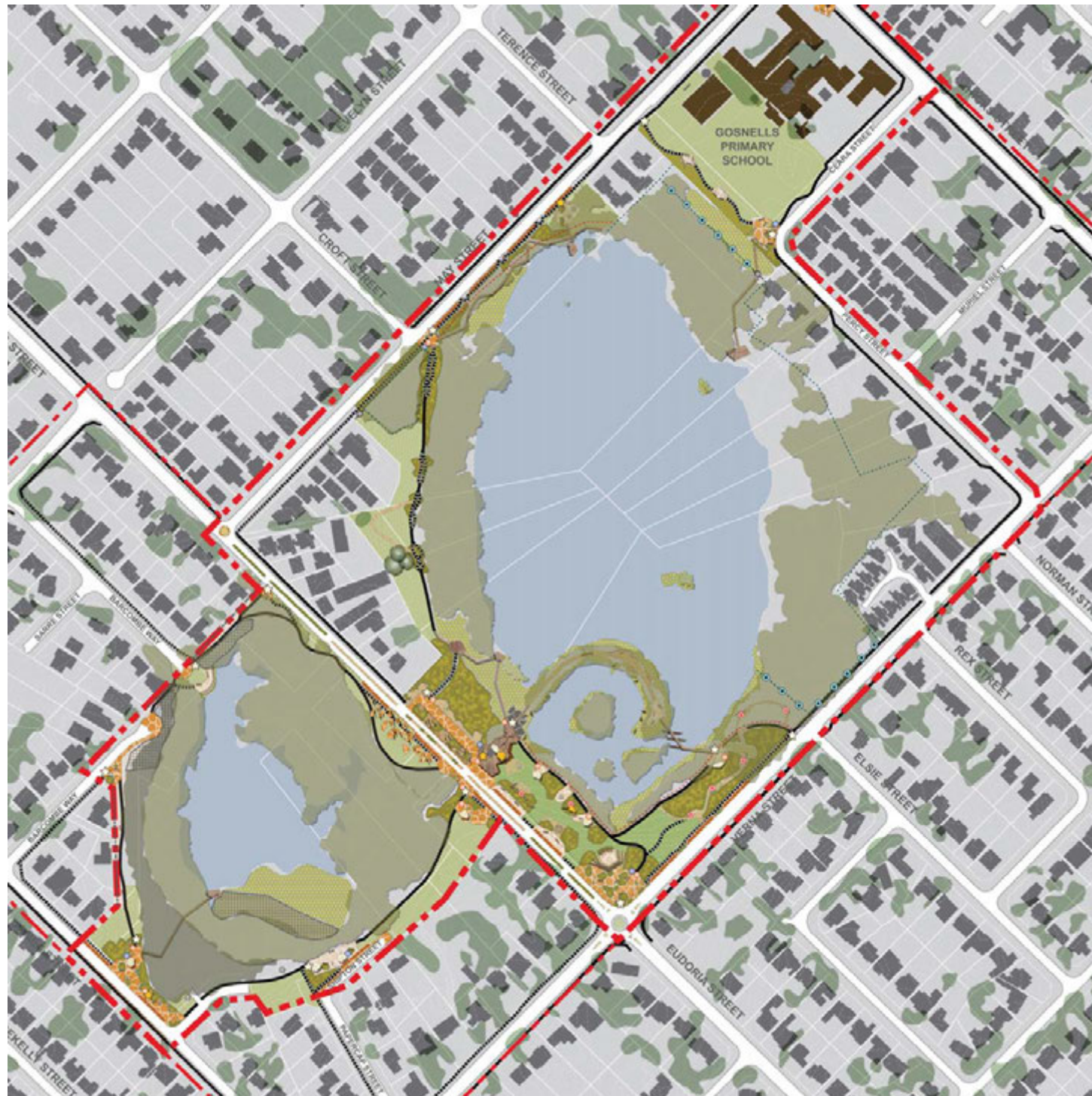
# Area 13 - Special Habitat Areas

## Role of the Area

Restricted access to the bird sanctuary.

Areas identified as key bird habitats will not be affected or developed. All construction works

adjacent to the bird habitats should undertake special care to ensure the areas are protected and not affected.



# Typical Construction Requirements

The following points apply in general to all stages of development and areas undergoing construction.

- All paths / decks / boardwalks are to meet AS 1428 ensuring access for all people.
- Construction of all boardwalk / viewing platform structures should be undertaken using minimal disturbance and located in degraded vegetation sites. Construction details should be similar to the 'concrete footing' construction system implemented at the Polytechnic West Thornlie on Burslem Drive, Gosnells.
- Bird hide structures are not to be enclosed or provide opportunity for antisocial behaviour.
- All works will be designed and constructed to meet the regulatory Australian Standards, Building Codes and City of Gosnells requirements.
- Central planted tree pits to be located in existing road median with no kerb detail.
- Typically all new pathway finishes which are not depicted as having a patterned finish should match the existing concrete path network finishes.
- Major node paving type will be an exposed aggregate finish with a dry cracked wetland colour to assist in managing bore staining over pavement areas. The cracked line work will be stencilled onto the pavement surface.
- Minor node paving type will be broom finish with a dry cracked wetland colour to assist in managing bore staining over pavement areas. The cracked line work will be stencilled onto the pavement surface.
- All proposed street tree planting will be in accordance with City of Gosnells preferred tree species guideline.
- All proposed planting will be native or endemic to the Mary Carroll Park precinct.
- New tree species to complement and enhance the existing local vegetation will be planted in clusters of 3, 5 or 7 similar to the natural tree formations.