

# References

## Reports and Publications

Bekle (1999) Monitoring of Waterbird Habitat Usage in the Mary Carroll Park Wetlands. City of Gosnells.

Chameleon Creative (2006) Ellis Brook Valley Signage Strategy Manual. City of Gosnells.

City of Gosnells (2002) City of Gosnells Town Planning Scheme 21. City of Gosnells.

City of Gosnells (2010) City of Gosnells Local Open Space Strategy. City of Gosnells.

City of Gosnells (2009) Gosnells' Pedestrian Wayfinding Signage Project: Signage Family. City of Gosnells.

Journal (2013) Landscape Architecture Australia - Canberra's Centenary No 138. Architecture Media.

Pedeserson and Conacher (1991) A Management Plan for the Mary Carroll Park Wetlands. City of Gosnells.

Regeneration Technology (1996) Rehabilitation Plan for Mary Carroll Park. City of Gosnells.

Subdivision and Development Abutting Public Spaces (LPP 4.10)

## Books

George Seddon (1972) Sense of Place - A response to an environment. University of Western Australia.

## World Wide Web

DEH Australian Wetlands Database

<http://www.environment.gov.au/water/publications/environmental/wetlands/database/>

DIA Aboriginal Heritage Search & Surveys

<http://www.dia.wa.gov.au/Heritage/SitesSurveys.aspx>

DOW Geographical Atlas Database

<http://www.environment.gov.au/water/publications/environmental/wetlands/database/>

DOW Perth Groundwater Atlas

<http://portal.water.wa.gov.au/portal/page/portal/MapsDataAtlases/PerthGroundwaterAtlas>

DEH EPBC Act

<http://www.environment.gov.au/epbc/>

Wikipedia

<http://en.wikipedia.org/wiki/Whadjuk>

Kaartdijin Noongar

<http://www.noongarculture.org.au/whadjuk/>

## Imagery

Bali Memorial in Kings Park

Baresque Studio Collection

Botanic Gardens of Adelaide

Burton Park

Creative Spaces

David Lancashire Design

Ecoscope

Houghton Wines

Jewel Cave Preservation Centre

Narambeen Trail

NSW Parks

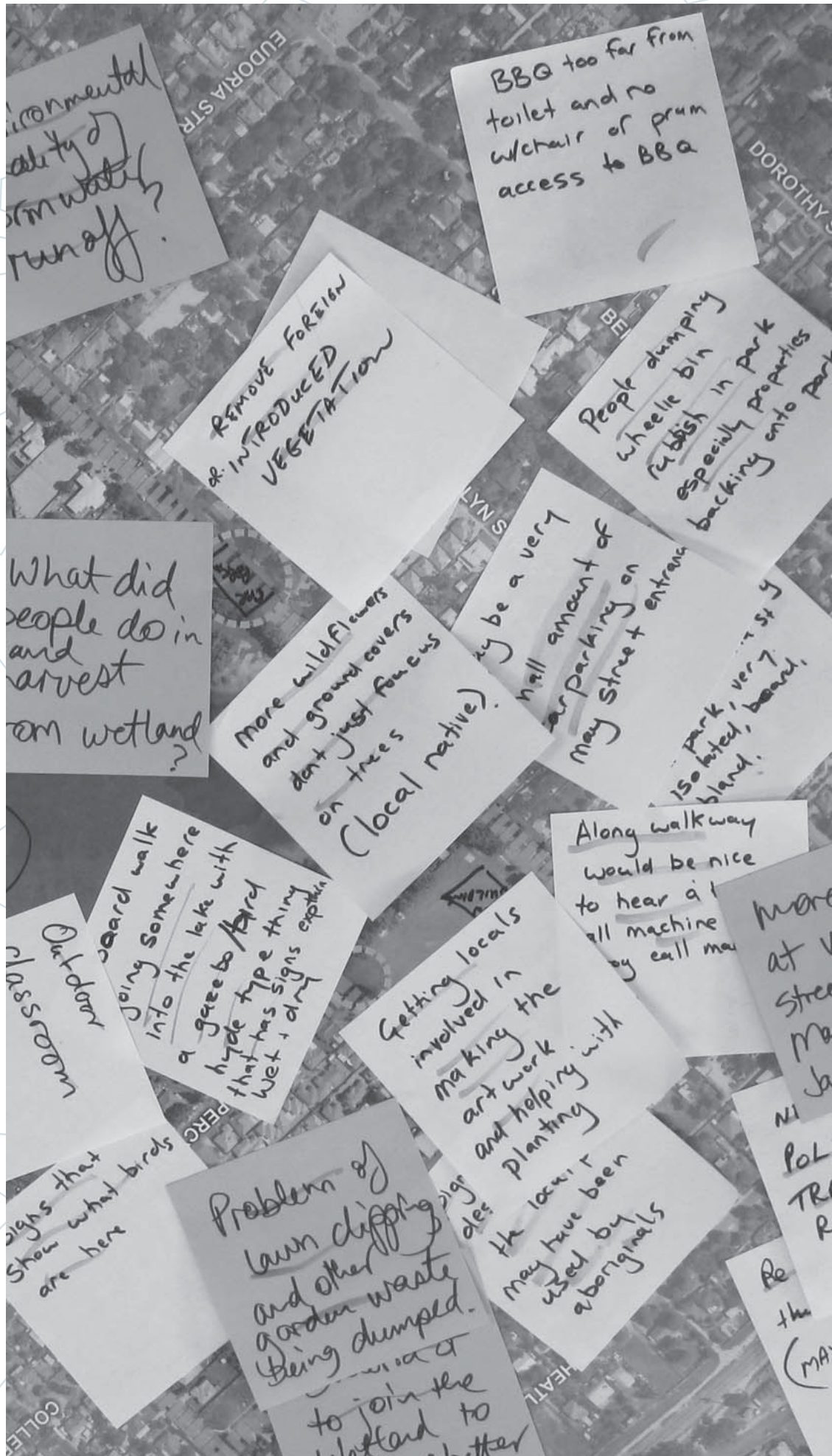
Port Botany - interpretation by Deuce Design

Tanner Springs

The West

Tianjin Qiaoyuan Wetland Park

# Appendices



# Consultation and Attendees

## Workshop 1 - Visioning

A 90 minute workshop was held on the 14 March 2013 at the Gosnells Primary School. The purpose of the workshop was to present the project outcomes prepared to date and gain valuable insight from the stakeholders listed in the consultancy brief.

The workshop was conducted in two parts:

### Site Appreciation

The City of Gosnells introduced the project and the design team to the stakeholders. Ecoscape and Creative Spaces then presented the following:

- project objectives
- biophysical and sociocultural analysis
- initial interpretation ideas
- opportunities and constraints.

### Visioning

The second part was a discussion session. The stakeholders broke into groups to discuss visioning and concept ideas. Including the following questions:

#### Discussion Questions

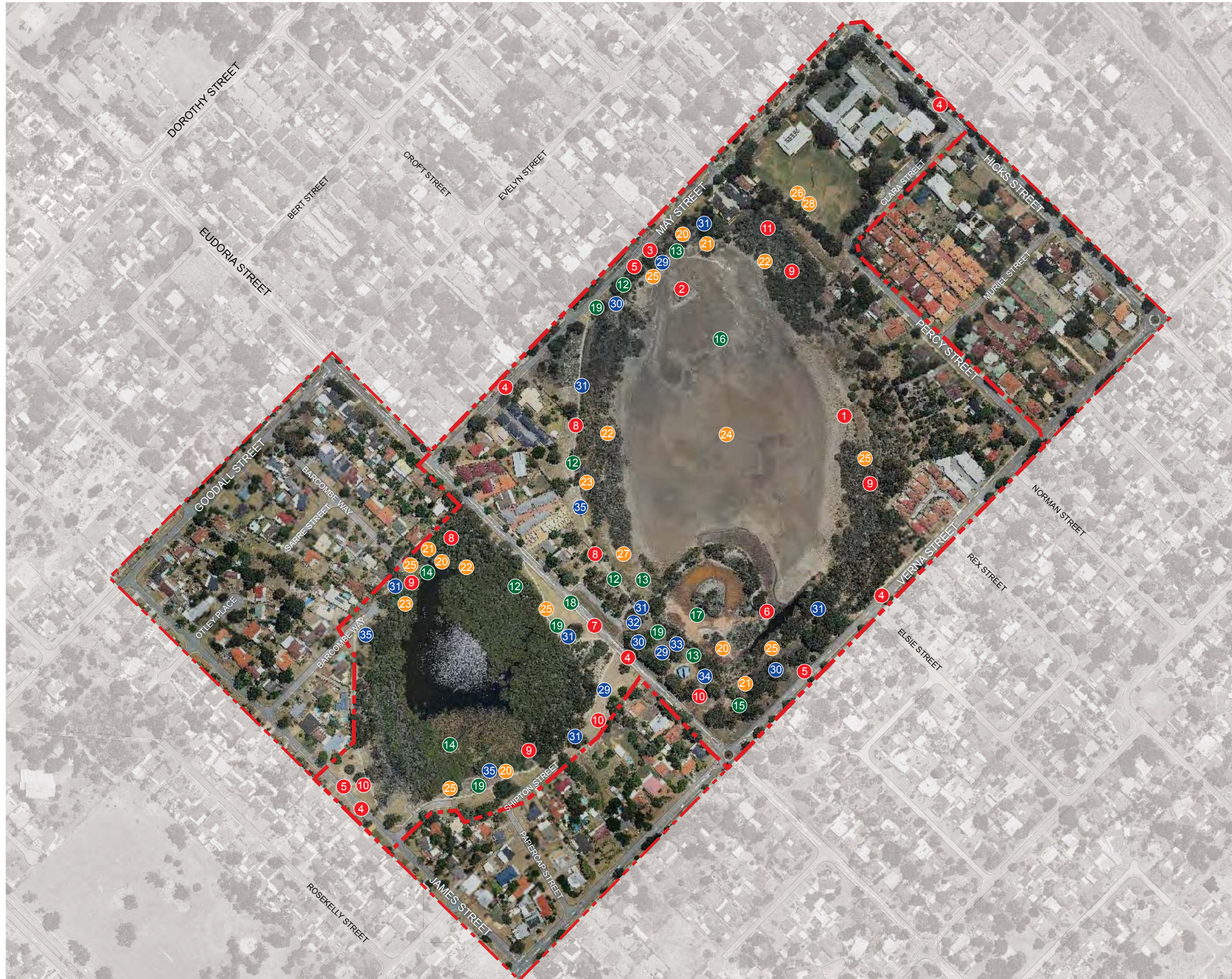
1. What does 'sense of place' mean to you?
2. What does Mary Carroll Park mean to you?
3. What is special about Mary Carroll Park?
4. How do you want to interact with Mary Carroll Park and the surrounding environment?

5. What would you want a visitor to remember about Mary Carroll Park long after they have visited?
6. What does the statement 'A Living Classroom' mean to you?

The groups then presented a summary of their tables' ideas to the larger group.

### Attendees List

Name and Company	Company
Cr Terry Brown	City of Gosnells
Gordana Nestic-Simic	City of Gosnells
Greg Bremner	City of Gosnells
Mayor Dave Griffiths	City of Gosnells
Wayne van Lieven	City of Gosnells
Gen Whisson	Creative Spaces
Rikki Clarke	Creative Spaces
Liam Mouritz	Ecoscape
Nicole Croudace	Ecoscape
Anne Donnelly	Local Resident
C Wellburn	Local Resident
Christine Kim	Local Resident
Helen Playford	Local Resident
J McNally	Local Resident
Jo Pescurd	Local Resident
Judy Race	Local Resident
Kerry Thiess	Local Resident
Les Judd	Local Resident
Lori Sharkey	Local Resident
Sunny Kim	Local Resident
Terry Brown	Local Resident
Shae Hughes	Local Resident and Friends of Mary Carroll Park
Joselyn Juraszek	Swan River Trust - River Rangers



## COMMUNITY COMMENTS

### ACCESS

- 1 POTENTIAL FOR CIRCUIT AROUND THE ENTIRE PARK
- 2 POTENTIAL FOR PATHS TO EXTEND INTO THE WETLAND
- 3 INCREASE PATH SYSTEM LEGIBILITY
- 4 SLOW VEHICLE TRAFFIC ON THE SURROUNDING ROADS
- 5 PROVISION OF MORE CAR PARKING
- 6 CONNECTION FROM CAUSEWAY TO THE MAINLAND
- 7 CREATE EUDORIA STREET AS A CUL DE SAC
- 8 IMPROVE PASSIVE SURVEILLANCE
- 9 PROHIBIT ACCESS FOR DOGS
- 10 ALLOW ACCESS FOR DOGS ON LEASHES
- 11 PROVIDE A CONNECTION FROM THE SCHOOL TO THE WETLAND

(24 COMMENTS)

### ENVIRONMENT AND REHABILITATION

- 12 NEED FOR FIRE HAZARD MANAGEMENT
- 13 RUBBISH DUMPING ISSUES
- 14 REMOVE WEED SPECIES
- 15 PROBLEM WITH MIDGES
- 16 POTENTIAL FOR GROUNDWATER TO BE USED TO TOP UP THE LAKE
- 17 PROVIDE A WATER AERATOR TO IMPROVE QUALITY
- 18 GROSS POLLUTANT TRAP ON ROAD DRAINS
- 19 PLANTING OF MORE WILDFLOWERS AND NATIVE PLANTS

(16 COMMENTS)

### CULTURAL AND INTERPRETATION

- 20 INTERPRET AND REFLECT UPON THE ENVIRONMENTAL CYCLES
- 21 EDUCATION AND INTERPRETATION ABOUT KEY ICONIC SPECIES
- 22 PROVIDE FOR BIRD VIEWING THROUGH BIRD HIDES & BOARDWALKS
- 23 CREATE LOOKOUT STRUCTURES
- 24 CREATE PUBLIC ART AS A FOCAL POINT IN THE LAKE
- 25 CREATE PUBLIC ART SCATTERED AROUND THE PARK
- 26 CREATE AN OUTDOOR CLASSROOM FOR THE LOCAL SCHOOL
- 27 LOCAL SCHOOL COMMUNITY PARTICIPATION IN RE-VEGETATION
- 28 CREATE AN ENVIRONMENTAL EDUCATION PHONE APP

(37 COMMENTS)

### INFRASTRUCTURE

- 29 MORE BINS
- 30 MORE BBQS
- 31 MORE SEATING
- 32 IMPROVED TOILETS
- 33 MORE DRINKING FOUNTAINS
- 34 EXISTING FACILITIES ARE TOO SPREAD OUT
- 35 IMPROVED LIGHTING

(16 COMMENTS)



## Workshop 2 - Draft Vision Plan

A 90 minute workshop was held on the 9 May 2013 at the Gosnells Primary School. The purpose of the workshop was to present the draft Vision Plan.

The workshop was conducted as detailed below:

### Outcomes of Workshop 1

City of Gosnells welcome and introduction for those not present at Workshop 1.

Ecoscape summarized the outcomes of Workshop 1 and Creative Spaces outlined the Aboriginal consultation.

### Vision and Guiding Principles

Ecoscape presented the vision and the guiding principles to the group.

### Vision Plan

Ecoscape and Creative Spaces discussed five key issues raised by the community at the workshop and how the draft concept plan has addressed them. The key areas included:

- Access
- Link between the school and park
- Environmental and social interpretation
- Improved facilities
- Environmental engineering and rehabilitation.

Participants joined in the discussion throughout the presentation to discuss issues as they were raised by the consultants.

### Attendees List

Name and Company	Address/Company
Anthony Denford	City of Gosnells
Cr Julie Brown	City of Gosnells
Dave Griffiths	City of Gosnells
Gordana Nestic-Simic	City of Gosnells
Terry Brown	City of Gosnells
Rikki Clarke	Creative Spaces
Nicole Croudace	Ecoscape
Anne Donnelly	Local Resident
Barbara Biugiou	Local Resident
Kehu Smith	Local Resident
Kerry Thiess	Local Resident
Lori Sharkey	Local Resident
Shae Hughes	Local Resident and Friends of Mary Carroll Park
Unice Robinson	Local Resident and Friends of Mary Carroll Park

## Aboriginal Community Consultation

### Interview

An interview with Robert Isaacs (resident, former Deputy Mayor) was held.

### Walk Around Mary Carroll Park

A walk around the Park was held on the 14 April 2013 with Angela Ryder (Langford Aboriginal Association) and Cassandra Ryder (Langford Aboriginal Association). This walk was followed up with further correspondence from Ted Wilkes (local Elder) and Glen Hayden (local resident).

