



### LEGEND

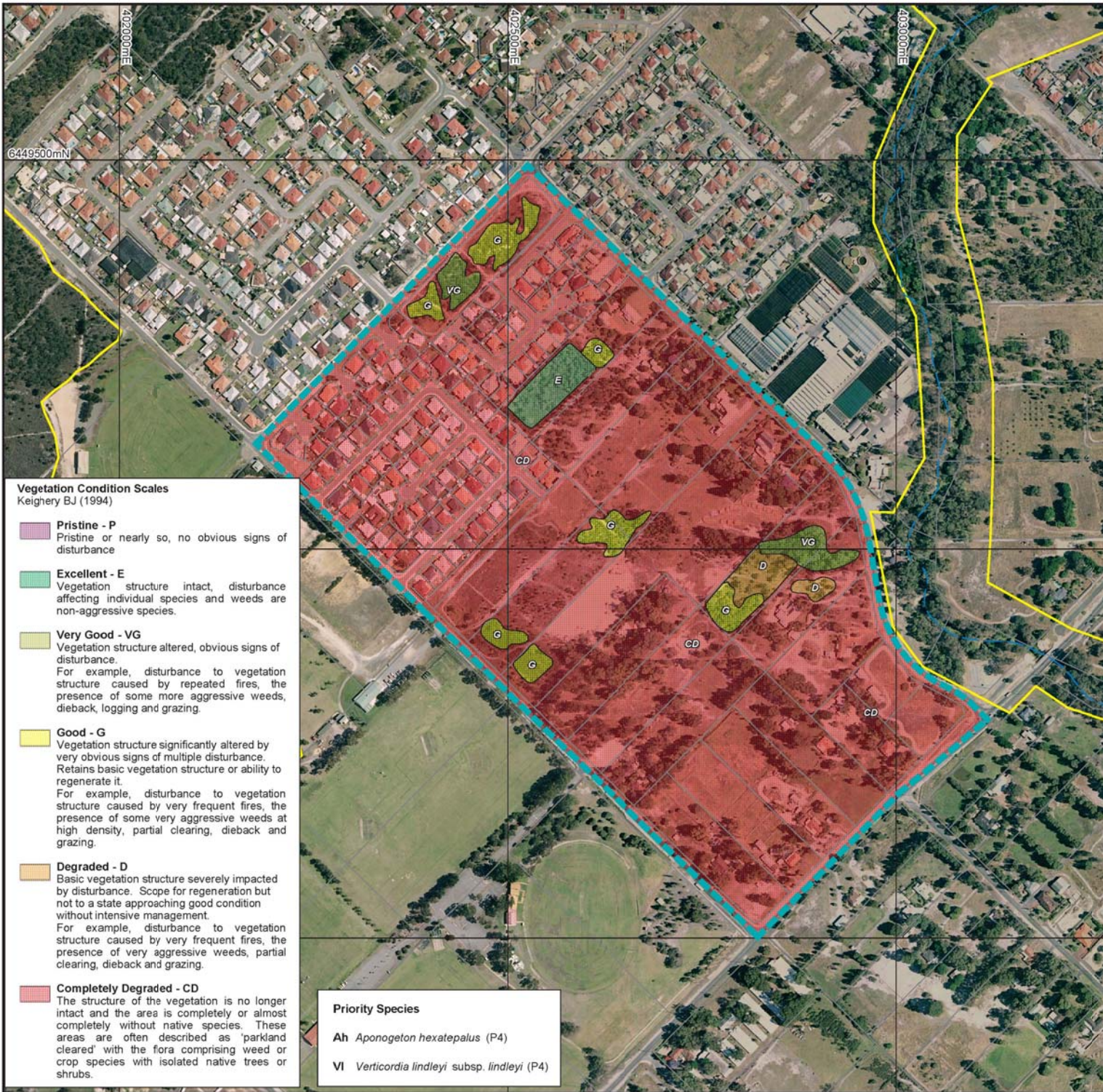
- Cadastral boundaries
- DPI Bush Forever sites
- Study Boundary

### NOTES

Base cadastral, land ownership and aerial photography used on this project supplied by City of Gosnells

Aerial photography based on the ECW files generated by DOLA of the Dec 2004/Jan 2005 aerial photography.

Bush Forever details supplied by Department of Planning and Infrastructure in June 2002



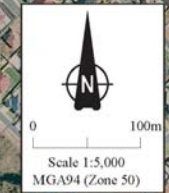
### Vegetation Condition Scales

Keignery BJ (1994)

- Pristine - P**  
Pristine or nearly so, no obvious signs of disturbance
- Excellent - E**  
Vegetation structure intact, disturbance affecting individual species and weeds are non-aggressive species.
- Very Good - VG**  
Vegetation structure altered, obvious signs of disturbance.  
For example, disturbance to vegetation structure caused by repeated fires, the presence of some more aggressive weeds, dieback, logging and grazing.
- Good - G**  
Vegetation structure significantly altered by very obvious signs of multiple disturbance. Retains basic vegetation structure or ability to regenerate it.  
For example, disturbance to vegetation structure caused by very frequent fires, the presence of some very aggressive weeds at high density, partial clearing, dieback and grazing.
- Degraded - D**  
Basic vegetation structure severely impacted by disturbance. Scope for regeneration but not to a state approaching good condition without intensive management.  
For example, disturbance to vegetation structure caused by very frequent fires, the presence of very aggressive weeds, partial clearing, dieback and grazing.
- Completely Degraded - CD**  
The structure of the vegetation is no longer intact and the area is completely or almost completely without native species. These areas are often described as 'parkland cleared' with the flora comprising weed or crop species with isolated native trees or shrubs.

### Priority Species

- Ah** *Aponogeton hexatepalus* (P4)
- VI** *Verticordia lindleyi* subsp. *lindleyi* (P4)



## SOUTHERN RIVER PRECINCT 3 EXTENSION VEGETATION



environmental management consultants  
PO Box 7480, Cloisters Square Perth W.A. 6850  
Tel: (08) 9289 8360 - Fax: (08) 9322 4251 - www.env.net.au

Author: N. Whittington	env job code: 05.131	Scale: 1:5000
Drawn: CAD Resources ~ www.cadresources.com.au	Tel: (08) 9246 3242 ~ Fax: (08) 9246 3202	Figure: <b>10</b>
CAD Ref: g1224_H01_Cond.dgn Date: Mar 06 A3 Rev: A		