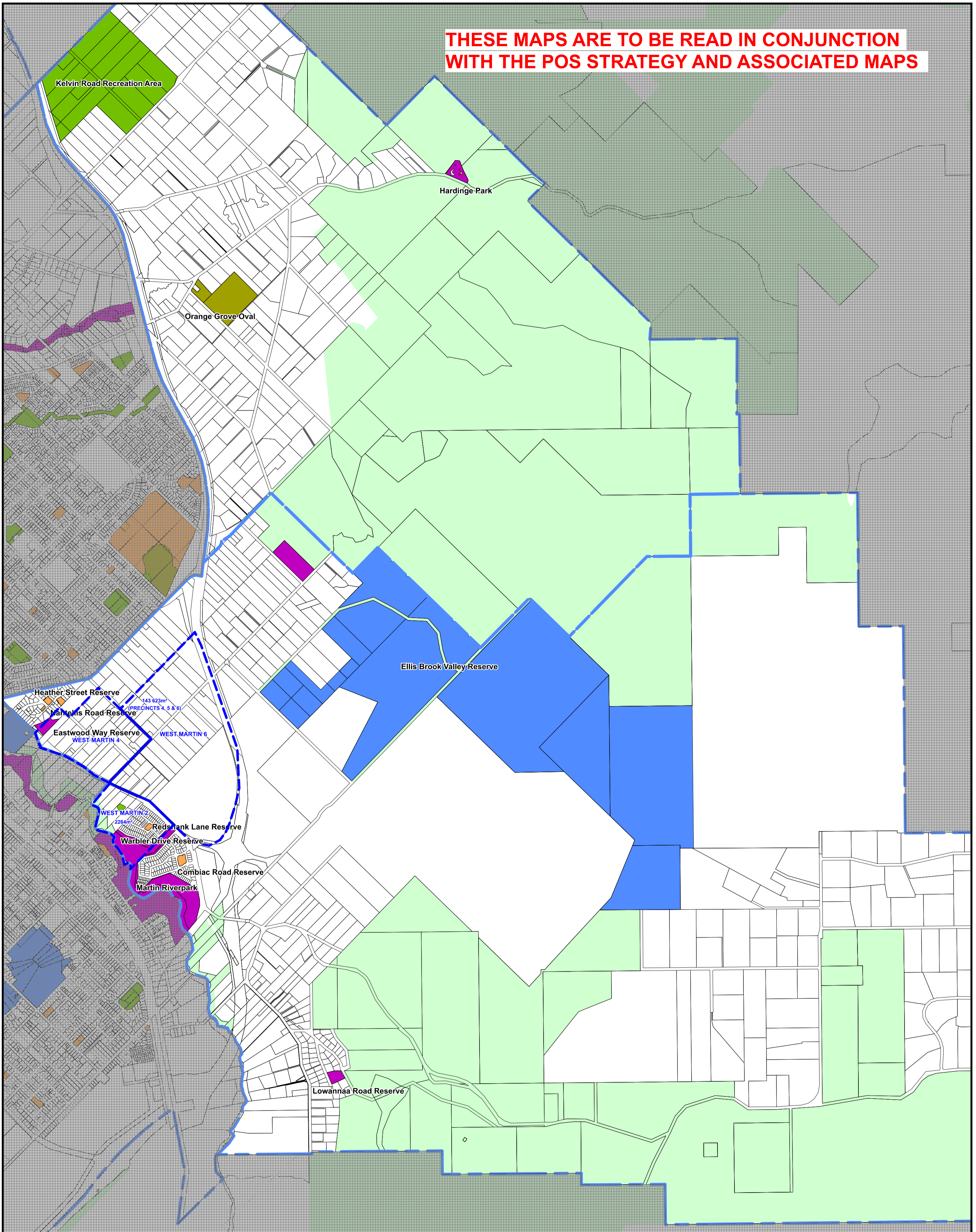







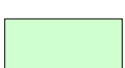



THESE MAPS ARE TO BE READ IN CONJUNCTION WITH THE POS STRATEGY AND ASSOCIATED MAPS



LEGEND

- | | | | | | |
|--|----------------------------|---|--------------------|---|--|
|  | DISTRICT |  | NEIGHBOURHOOD |  | STRATEGIC ACQUISITION PRECINCT AND DESIRED AMOUNT OF POS |
|  | REGIONAL |  | LOCAL |  | WHERE POS IS REQUIRED VIA STATUTORY FRAMEWORK |
|  | MANAGED BIODIVERSITY ASSET |  | UNMANAGED P&R LAND |  | POS LAND REQUIRED VIA SUBDIVISION |

MARTIN/ORANGE GROVE



CITY OF GOSNELLS

STRATEGY OUTCOMES MAP

DATE: 12/2/2019 SCALE: N.T.S.

MGA94 ZONE 50

M:\PROJECTS\Infrastructure\workspaces\
POS_Strategy_2017_Martin_OrangeGrove_SOM.wor

