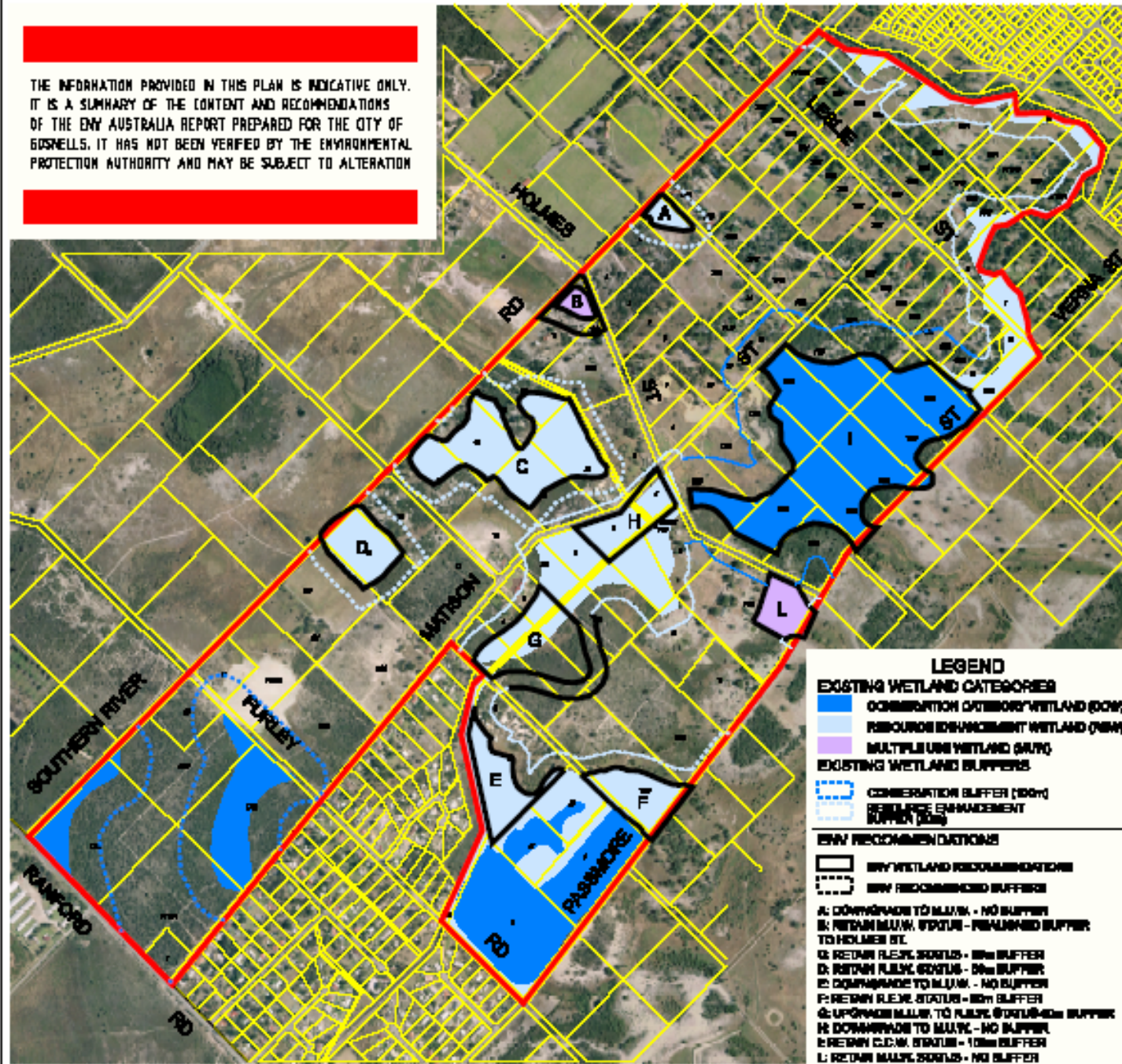


THE INFORMATION PROVIDED IN THIS PLAN IS INDICATIVE ONLY. IT IS A SUMMARY OF THE CONTENT AND RECOMMENDATIONS OF THE ENV AUSTRALIA REPORT PREPARED FOR THE CITY OF GOSNELLS. IT HAS NOT BEEN VERIFIED BY THE ENVIRONMENTAL PROTECTION AUTHORITY AND MAY BE SUBJECT TO ALTERATION



LEGEND

EXISTING WETLAND CATEGORIES

- CONSERVATION CATEGORY WETLAND (CCW)
- RESOURCE ENHANCEMENT WETLAND (REW)
- MULTIPLE USE WETLAND (MUW)

EXISTING WETLAND BUFFERS

- CONSERVATION BUFFER (100m)
- RESOURCE ENHANCEMENT BUFFER (50m)

ENV RECOMMENDATIONS

- ENV WETLAND RECOMMENDATIONS
- ENV RECOMMENDED BUFFERS

A: DOWNGRADE TO MUW - NO BUFFER
B: RETAIN MUW STATUS - REMAIND BUFFER TO HOLMES ST.
C: RETAIN REW STATUS - 50m BUFFER
D: RETAIN REW STATUS - 50m BUFFER
E: DOWNGRADE TO MUW - NO BUFFER
F: RETAIN REW STATUS - 50m BUFFER
G: UPGRADE MUW TO REW STATUS - 50m BUFFER
H: DOWNGRADE TO MUW - NO BUFFER
I: RETAIN CCW STATUS - 100m BUFFER
L: RETAIN MUW STATUS - NO BUFFER



CITY OF GOSNELLS

Copyright City of Gosnells 2006

**SOUTHERN RIVER PRECINCT 3
SUMMARY OF WETLAND & BUFFER REQUIREMENTS**

FILE No. COSR3_WETBUFFERS.DGN

GRD MSA14 12 June 01

N.T.S.